

Anti-SNAPC2 antibody (20-100) (STJ118509)

STJ118509

GENERAL INFORMATION

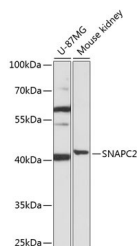
Product Type	Primary antibodies
Short Description	
Applications	WB/ELISA
Host/Source	Rabbit
Reactivity	Human/Mouse

PRODUCT PROPERTIES

Clonality	Polyclonal
Clone ID	
Concentration	Lot specific
Conjugation	Unconjugated
Purification	Affinity purification
Dilution Range	WB:1:500-1:2000 ELISA:Recommended starting concentration is 1 μ g/mL. Please optimize the concentration based on your specific assay requirements.
Formulation	PBS with 0.01% Thimerosal, 50% Glycerol, pH 7.3.
Isotype	IgG
Storage Instruction	Store at -20°C for up to 1 year from the date of receipt, and avoid repeat freeze-thaw cycles.

TARGET INFORMATION

Gene ID	6618
Gene Symbol	SNAPC2
Uniprot ID	SNPC2_HUMAN
Immunogen	
Immunogen Region	20-100
Specificity	Recombinant fusion protein containing a sequence corresponding to amino acids 20-100 of human SNAPC2 (NP_003074.1).
Immunogen Sequence	GPATWSAREKRQLVRLQLAR QGQPEPDATLARELRGRSE AEIRVFLQQLKGRVAREAIQ KVHPGGLQGPRRREAQPPAP I



Western blot analysis of extracts of various cell lines, using SNAPC2 antibody (STJ118509) at 1:1000 dilution. Secondary antibody: HRP Goat Anti-rabbit IgG (H+L) (STJUS000856) at 1:10000 dilution. Lysates/proteins: 25 μ g per lane. Blocking buffer: 3% non-fat dry milk in TBST. Detection: ECL Basic Kit. Exposure time: 30s.

This product is suitable for in-vitro studies under the RESEARCH USE ONLY [RUO] licence. This product must not be used as for diagnostic or other medical purposes.
St John's Laboratory Ltd, Knowledge Dock Business Centre, University Way, London, E16 2RD | Tel: 0208 223 3081