

Anti-ABCD2 antibody (420-500) (STJ118473)

STJ118473

GENERAL INFORMATION

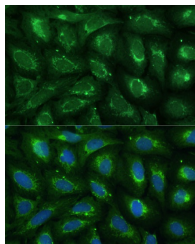
Product Type	Primary antibodies
Short Description	
Applications	WB/IF/ICC/ELISA
Host/Source	Rabbit
Reactivity	Human/Mouse/Rat

PRODUCT PROPERTIES

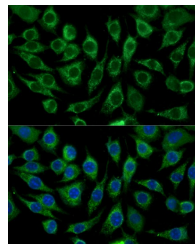
Clonality	Polyclonal
Clone ID	
Concentration	Lot specific
Conjugation	Unconjugated
Purification	Affinity purification
Dilution Range	WB:1:500-1:2000 IF/ICC:1:50-1:100 ELISA:Recommended starting concentration is 1 µg/mL. Please optimize the concentration based on your specific assay requirements.
Formulation	PBS with 0.01% Thimerosal, 50% Glycerol, pH 7.3.
Isotype	IgG
Storage Instruction	Store at -20°C for up to 1 year from the date of receipt, and avoid repeat freeze-thaw cycles.

TARGET INFORMATION

Gene ID	225
Gene Symbol	ABCD2
Uniprot ID	ABCD2_HUMAN
Immunogen	
Immunogen Region	420-500
Specificity	Recombinant fusion protein containing a sequence corresponding to amino acids 420-500 of human ABCD2 (NP_005155.1).
Immunogen Sequence	TARVYNMFVWFDEVKRGYK RTAVIQESESSESKNGAKVEL PLSDTLAIKGVIDVDHGII CENVPIITPAGEVVASRLNF K



Immunofluorescence analysis of U-2 OS cells using ABCD2 Rabbit polyclonal antibody (STJ118473) at dilution of 1:100 (40x lens). Secondary antibody: Cy3 Goat Anti-Rabbit IgG (H+L) at 1:500 dilution. Blue: DAPI for nuclear staining.



Immunofluorescence analysis of L929 cells using ABCD2 Rabbit polyclonal antibody (STJ118473) at dilution of 1:100 (40x lens). Secondary antibody: Cy3 Goat Anti-Rabbit IgG (H+L) at 1:500 dilution. Blue: DAPI for nuclear staining.

This product is suitable for in-vitro studies under the RESEARCH USE ONLY [RUO] licence. This product must not be used as for diagnostic or other medical purposes.
St John's Laboratory Ltd, Knowledge Dock Business Centre, University Way, London, E16 2RD | Tel: 0208 223 3081