

Anti-PRRT2 antibody (20-130) (STJ118467)

STJ118467

GENERAL INFORMATION

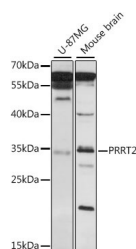
Product Type	Primary antibodies
Short Description	
Applications	WB/ELISA
Host/Source	Rabbit
Reactivity	Human/Mouse

PRODUCT PROPERTIES

Clonality	Polyclonal
Clone ID	
Concentration	Lot specific
Conjugation	Unconjugated
Purification	Affinity purification
Dilution Range	WB:1:500-1:2000 ELISA: Recommended starting concentration is 1 µg/mL. Please optimize the concentration based on your specific assay requirements.
Formulation	PBS with 0.01% Thimerosal, 50% Glycerol, pH 7.3.
Isotype	IgG
Storage Instruction	Store at -20°C for up to 1 year from the date of receipt, and avoid repeat freeze-thaw cycles.

TARGET INFORMATION

Gene ID	112476
Gene Symbol	PRRT2
Uniprot ID	PRRT2_HUMAN
Immunogen	
Immunogen Region	20-130
Specificity	Recombinant fusion protein containing a sequence corresponding to amino acids 20-130 of human PRRT2 (NP_660282.2). VPGEGPGHSEAETGPPQVLA GVPDOPEAPQPGPNTTAAPV DSGPKAGLAPETTETPAGAS ETAQATDLSLSPGGESKANC
Immunogen Sequence	SPEDPCQETVSKPEVSKEAT ADQGSRLSAA



Western blot analysis of various lysates using PRRT2 Rabbit polyclonal antibody (STJ118467) at 1:1000 dilution. Secondary antibody: HRP Goat Anti-Rabbit IgG (H+L) (STJS000856) at 1:10000 dilution. Lysates/proteins: 25 µg per lane. Blocking buffer: 3% nonfat dry milk in TBST. Detection: ECL Basic Kit. Exposure time: 5s.

This product is suitable for in-vitro studies under the RESEARCH USE ONLY [RUO] licence. This product must not be used as for diagnostic or other medical purposes.
St John's Laboratory Ltd, Knowledge Dock Business Centre, University Way, London, E16 2RD | Tel: 0208 223 3081