

Anti-SLC14A1 antibody (244-257) (STJ118436)

STJ118436

GENERAL INFORMATION

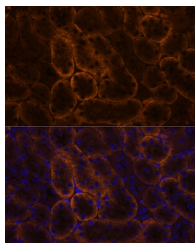
Product Type	Primary antibodies
Short Description	
Applications	WB/IHC-P/IF/ICC/ELISA
Host/Source	Rabbit
Reactivity	Human/Mouse/Rat

PRODUCT PROPERTIES

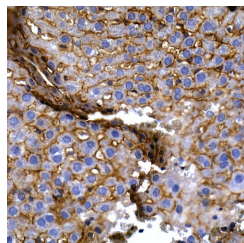
Clonality	Polyclonal
Clone ID	
Concentration	Lot specific
Conjugation	Unconjugated
Purification	Affinity purification
Dilution	WB:1:100-1:500
Range	IHC-P:1:50-1:200 IF/ICC:1:50-1:200 ELISA:Recommended starting concentration is 1 μ g/mL. Please optimize the concentration based on your specific assay requirements.
Formulation	PBS with 0.05% Proclin300, 50% Glycerol, pH 7.3.
Isotype	IgG
Storage	Store at -20°C for up to 1 year from the date of receipt, and avoid repeat freeze-thaw cycles.
Instruction	

TARGET INFORMATION

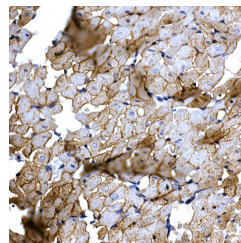
Gene ID	6563
Gene Symbol	SLC14A1
Uniprot ID	UT1_HUMAN
Immunogen	
Immunogen Region	244-257
Specificity	A synthetic peptide corresponding to a sequence within amino acids 158-257 of human SLC14A1 (NP_001295208.1).
Immunogen Sequence	PIFSSALNSMLSKWDLPVFT LPFNMAISMYLSATGHYNPF FPAKLVIPITTAPNISWSDL SALELLKSIPVGVGGIYGC NPWTGGIFLGAILLSSPLMC LHAAGSLLGIAAGLSLAP FEDIYFGLWGFNSSLACIAM GGMFMALTWQTHLLALGCAL FTAYLGVGMANFMAEVLPLA CTWPFCLATLLFLIMTTKNS NIYKMPLSKVTYPEENRIFY LQAKKRMVESPL



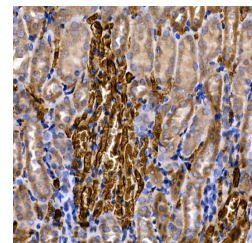
Immunofluorescence analysis of mouse kidney using SLC14A1 antibody (STJ118436) at dilution of 1:100. Blue: DAPI for nuclear staining.



Immunohistochemistry analysis of paraffin-embedded rat liver using SLC14A1 Rabbit polyclonal antibody (STJ118436) at dilution of 1:200 (40x lens). Perform high pressure antigen retrieval with 10 mM citrate buffer pH 6.0 before commencing with immunohistochemistry staining protocol.



Immunohistochemistry analysis of paraffin-embedded rat heart using SLC14A1 Rabbit polyclonal antibody (STJ118436) at dilution of 1:200 (40x lens). Perform high pressure antigen retrieval with 10 mM citrate buffer pH 6.0 before commencing with immunohistochemistry staining protocol.



Immunohistochemistry analysis of paraffin-embedded mouse kidney using SLC14A1 Rabbit polyclonal antibody (STJ118436) at dilution of 1:200 (40x lens). Perform high pressure antigen retrieval with 10 mM citrate buffer pH 6.0 before commencing with immunohistochemistry staining protocol.

This product is suitable for in-vitro studies under the RESEARCH USE ONLY [RUO] licence. This product must not be used as for diagnostic or other medical purposes.
St John's Laboratory Ltd, Knowledge Dock Business Centre, University Way, London, E16 2RD | Tel: 0208 223 3081