

## Anti-TMEM44 antibody (110-260) (STJ118374)

STJ118374

### GENERAL INFORMATION

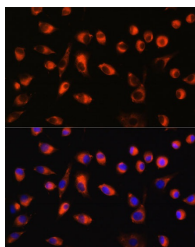
|                          |                    |
|--------------------------|--------------------|
| <b>Product Type</b>      | Primary antibodies |
| <b>Short Description</b> |                    |
| <b>Applications</b>      | WB/IF/ICC/ELISA    |
| <b>Host/Source</b>       | Rabbit             |
| <b>Reactivity</b>        | Mouse/Rat          |

### PRODUCT PROPERTIES

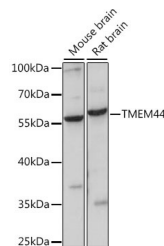
|                            |  |
|----------------------------|--|
| <b>Clonality</b>           | Polyclonal   |
| <b>Clone ID</b>            |  |
| <b>Concentration</b>       | Lot specific   |
| <b>Conjugation</b>         | Unconjugated   |
| <b>Purification</b>        | Affinity purification  |
| <b>Dilution</b>            | WB:1:500-1:2000  |
| <b>Range</b>               | IF/CC:1:50-1:200   |
|                            | ELISA:Recommended starting concentration is 1 $\mu$ g/mL. Please optimize the concentration based on your specific assay requirements. |
| <b>Formulation</b>         | PBS with 0.01% Thimerosal, 50% Glycerol, pH 7.3.   |
| <b>Isotype</b>             | IgG  |
| <b>Storage Instruction</b> | Store at -20°C for up to 1 year from the date of receipt, and avoid repeat freeze-thaw cycles.   |

### TARGET INFORMATION

|                           |  |
|---------------------------|--|
| <b>Gene ID</b>            | 93109  |
| <b>Gene Symbol</b>        | TMEM44   |
| <b>Uniprot ID</b>         | TMM44_HUMAN  |
| <b>Immunogen</b>          |  |
| <b>Immunogen Region</b>   | 110-260  |
| <b>Specificity</b>        | Recombinant fusion protein containing a sequence corresponding to amino acids 110-260 of human TMEM44 (NP_001159777.1).  |
| <b>Immunogen Sequence</b> | VCGSKFKSNSDREARERKRR RQLRASVFALALPLSLGPCW ALWVAVPKASATIRGPPQRR LASLLQENTEILGYLLGSVA<br>AFGSWASRIPLSRIAPPPT LGITTQHEIWRGQMSKPSQS PSRSPSGHWRAAAQRQVLGT EMCRGKTFPSI |



Immunofluorescence analysis of L929 cells using TMEM44 Rabbit polyclonal antibody (STJ118374) at dilution of 1:100. Secondary antibody: Cy3 Goat Anti-Rabbit IgG (H+L) at 1:500 dilution. Blue: DAPI for nuclear staining.



Western blot analysis of various lysates using TMEM44 Rabbit polyclonal antibody (STJ118374) at 1:1000 dilution. Secondary antibody: HRP Goat Anti-Rabbit IgG (H+L) (STJS000856) at 1:10000 dilution. Lysates/proteins: 25  $\mu$ g per lane. Blocking buffer: 3% nonfat dry milk in TBST. Detection: ECL Basic Kit. Exposure time: 30s.