

Anti-MAP7D1 antibody (200-460) (STJ118307)

STJ118307

GENERAL INFORMATION

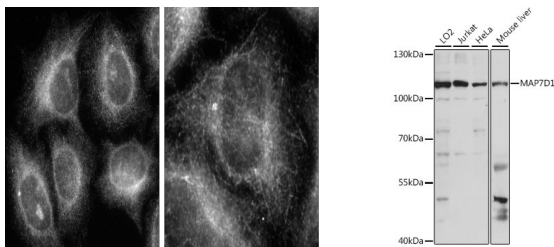
Product Type	Primary antibodies
Short Description	
Applications	WB/ELISA
Host/Source	Rabbit
Reactivity	Human/Mouse

PRODUCT PROPERTIES

Clonality	Polyclonal
Clone ID	
Concentration	Lot specific
Conjugation	Unconjugated
Purification	Affinity purification
Dilution	WB:1:500-1:2000
Range	ELISA:Recommended starting concentration is 1 Mu g/mL. Please optimize the concentration based on your specific assay requirements.
Formulation	PBS with 0.01% Thimerosal, 50% Glycerol, pH 7.3.
Isotype	IgG
Storage	Store at -20°C for up to 1 year from the date of receipt, and avoid repeat freeze-thaw cycles.
Instruction	

TARGET INFORMATION

Gene ID	55700
Gene Symbol	MAP7D1
Uniprot ID	MA7D1_HUMAN
Immunogen	
Immunogen Region	200-460
Specificity	Recombinant fusion protein containing a sequence corresponding to amino acids 200-460 of human MAP7D1 (NP_060537.3).
Immunogen Sequence	QRQKLEKNKERYEAAIQRSV KKTWAEIRQQRWSWAGALHH SSPGHKTSGRCSVSAVNLP KHVDSIINKRLSKSSATLWN SPSRNRSLSAWESSIVDR LMTPTLSFLARSRSVAVTLPR NGRDQGRGCDPGRGPTWGRA GASLARGPQPDRTHPAAVP VCPRSASASPLTPCSVTRSV HRCAPAGERGERRKPNAGGS PAPVRRRPEASPVQKKEKKD KERENEKEKSALARERSLK



Western blot analysis of various lysates using MAP7D1 Rabbit polyclonal antibody (STJ118307) at 1:1000 dilution. Secondary antibody: HRP Goat Anti-Rabbit IgG (H+L) (STJS000856) at 1:10000 dilution. Lysates/proteins: 25 Mu g per lane. Blocking buffer: 3% nonfat dry milk in TBST. Detection: ECL Basic Kit. Exposure time: 10s.