

Anti-ASCC1 antibody (1-180) (STJ118277)

STJ118277

GENERAL INFORMATION

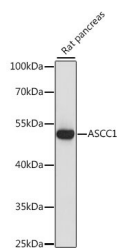
Product Type	Primary antibodies
Short Description	
Applications	WB/ELISA
Host/Source	Rabbit
Reactivity	Human/Mouse/Rat

PRODUCT PROPERTIES

Clonality	Polyclonal
Clone ID	
Concentration	Lot specific
Conjugation	Unconjugated
Purification	Affinity purification
Dilution	WB:1:500-1:2000
Range	ELISA:Recommended starting concentration is 1 Mu g/mL. Please optimize the concentration based on your specific assay requirements.
Formulation	PBS with 0.01% Thimerosal, 50% Glycerol, pH 7.3.
Isotype	IgG
Storage	Store at -20°C for up to 1 year from the date of receipt, and avoid repeat freeze-thaw cycles.
Instruction	

TARGET INFORMATION

Gene ID	51008
Gene Symbol	ASCC1
Uniprot ID	ASCC1_HUMAN
Immunogen	
Immunogen Region	1-180
Specificity	Recombinant fusion protein containing a sequence corresponding to amino acids 1-180 of human ASCC1 (NP_001185727.1).
Immunogen Sequence	MEVLRPQLIRIDGRNYRKNP VQEQTQHEEEDFYQGSM ECADEPCDAYEVEQTPQGFR STLRAPSLLYKHIVGKRGDT RKKIEMETKTSISIPKPGQD GEIVITGQHRNGVISARTRI DVLLDTFRRKQPFTHFLAFF LNEVEVQEGFLRFQEEVLAK CSMDHGVDSIFQNPKKLHL



Western blot analysis of lysates from rat pancreas, using ASCC1 Rabbit polyclonal antibody (STJ118277) at 1:1000 dilution. Secondary antibody: HRP Goat Anti-Rabbit IgG (H+L) (STJS000856) at 1:10000 dilution. Lysates/proteins: 25 Mu g per lane. Blocking buffer: 3% nonfat dry milk in TBST. Detection: ECL Basic Kit. Exposure time: 10s.

This product is suitable for in-vitro studies under the RESEARCH USE ONLY [RUO] licence. This product must not be used as for diagnostic or other medical purposes.
St John's Laboratory Ltd, Knowledge Dock Business Centre, University Way, London, E16 2RD | Tel: 0208 223 3081