

Anti-MYEF2 antibody (1-120) (STJ118274)

STJ118274

GENERAL INFORMATION

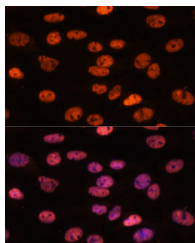
Product Type	Primary antibodies
Short Description	
Applications	WB/IHC-P/IF/ICC/ELISA
Host/Source	Rabbit
Reactivity	Human/Mouse/Rat

PRODUCT PROPERTIES

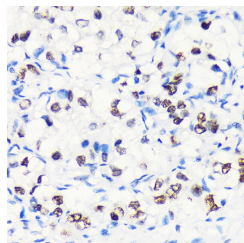
Clonality	Polyclonal
Clone ID	
Concentration	Lot specific
Conjugation	Unconjugated
Purification	Affinity purification
Dilution Range	WB:1:500-1:2000 IHC-P:1:50-1:200 IF/ICC:1:50-1:200 ELISA:Recommended starting concentration is 1 Mu g/mL. Please optimize the concentration based on your specific assay requirements.
Formulation	PBS with 0.01% Thimerosal, 50% Glycerol, pH 7.3.
Isotype	IgG
Storage	Store at -20°C for up to 1 year from the date of receipt, and avoid repeat freeze-thaw cycles.
Instruction	

TARGET INFORMATION

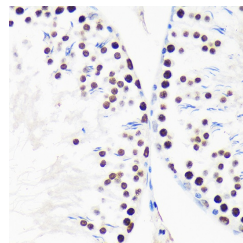
Gene ID	50804
Gene Symbol	MYEF2
Uniprot ID	MYEF2_HUMAN
Immunogen	
Region	1-120
Specificity	Recombinant fusion protein containing a sequence corresponding to amino acids 1-120 of human MYEF2 (NP_001288139.1).
Immunogen Sequence	MADANKAEVPGATGGDSPHL QPAEPPGEPREPHPAEAEK QQPQHSSSSNGVKMENDESA KEEKSDLKEKSTGSKKANRF HPYSKDKNSGTGEKKGPNRN RVFISNIPYDMKWQAIDLM



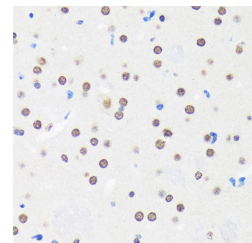
Immunofluorescence analysis of C6 cells using MYEF2 Rabbit polyclonal antibody (STJ118274) at dilution of 1:100. Secondary antibody: Cy3 Goat Anti-Rabbit IgG (H+L) at 1:500 dilution. Blue: DAPI for nuclear staining.



Immunohistochemistry analysis of MYEF2 in paraffin-embedded Human liver cancer using MYEF2 Rabbit polyclonal antibody (STJ118274) at dilution of 1:100 (40x lens). Perform microwave antigen retrieval with 10 mM PBS buffer pH 7.2 before commencing with immunohistochemistry staining protocol.



Immunohistochemistry analysis of MYEF2 in paraffin-embedded Rat testis using MYEF2 Rabbit polyclonal antibody (STJ118274) at dilution of 1:100 (40x lens). Perform microwave antigen retrieval with 10 mM PBS buffer pH 7.2 before commencing with immunohistochemistry staining protocol.



Immunohistochemistry analysis of MYEF2 in paraffin-embedded Mouse brain using MYEF2 Rabbit polyclonal antibody (STJ118274) at dilution of 1:100 (40x lens). Perform microwave antigen retrieval with 10 mM PBS buffer pH 7.2 before commencing with immunohistochemistry staining protocol.

This product is suitable for in-vitro studies under the RESEARCH USE ONLY [RUO] licence. This product must not be used as for diagnostic or other medical purposes.
St John's Laboratory Ltd, Knowledge Dock Business Centre, University Way, London, E16 2RD | Tel: 0208 223 3081