

Anti-UNC13B antibody (1-350) (STJ118225)

STJ118225

GENERAL INFORMATION

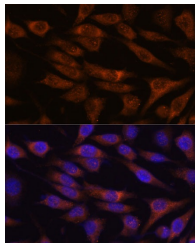
Product Type	Primary antibodies
Short Description	
Applications	WB/IHC-P/IF/ICC/ELISA
Host/Source	Rabbit
Reactivity	Human/Mouse

PRODUCT PROPERTIES

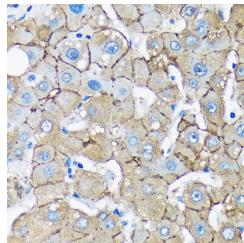
Clonality	Polyclonal
Clone ID	
Concentration	Lot specific
Conjugation	Unconjugated
Purification	Affinity purification
Dilution	WB:1:500-1:2000
Range	IHC-P:1:50-1:200 IF/ICC:1:50-1:200 ELISA:Recommended starting concentration is 1 µg/mL. Please optimize the concentration based on your specific assay requirements.
Formulation	PBS with 0.01% Thimerosal, 50% Glycerol, pH 7.3.
Isotype	IgG
Storage	Store at -20°C for up to 1 year from the date of receipt, and avoid repeat freeze-thaw cycles.
Instruction	

TARGET INFORMATION

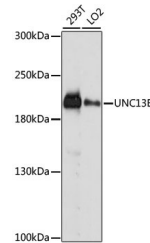
Gene ID	10497
Gene Symbol	UNC13B
Uniprot ID	UN13B_HUMAN
Immunogen	
Immunogen Region	1-350
Specificity	Recombinant fusion protein containing a sequence corresponding to amino acids 1-350 of human UNC13B (NP_006368.3).
Immunogen Sequence	MSLLCVRVKRAKFGSPDKF NTYVTLKVQNVKSTTVAVRG DQPSWEQDFMFEISRLDLGL SVEVWNKGLIWDTMVGTWVI ALKTIQRSDEEGPGEWSTLE AETLMKDDEICGTRNTPHK ILLDTRFELPFDIPEEEARY WTYKWEQINALGADNEYSSQ EESQRKPLPTAAACSFEDP DSAVDDRDSYRSETSNSFP PPYHTASQPNASVHQFPVPV RSPQQLLLQGSSRDSCNDS



Immunofluorescence analysis of L929 cells using UNC13B Rabbit polyclonal antibody (STJ118225) at dilution of 1:100. Secondary antibody: Cy3 Goat Anti-Rabbit IgG (H+L) at 1:500 dilution. Blue: DAPI for nuclear staining.



Immunohistochemistry analysis of UNC13B in paraffin-embedded Human liver using UNC13B Rabbit polyclonal antibody (STJ118225) at dilution of 1:100 (40x lens). Perform microwave antigen retrieval with 10 mM PBS buffer pH 7.2 before commencing with immunohistochemistry staining protocol.



Western blot analysis of various lysates using UNC13B Rabbit polyclonal antibody (STJ118225) at 1:1000 dilution. Secondary antibody: HRP Goat Anti-Rabbit IgG (H+L) (STJ5000856) at 1:10000 dilution. Lysates/proteins: 25 µg per lane. Blocking buffer: 3% nonfat dry milk in TBST. Detection: ECL Basic Kit. Exposure time: 10s.