

## Anti-ACAA2 antibody (1-250) (STJ118223)

STJ118223

### GENERAL INFORMATION

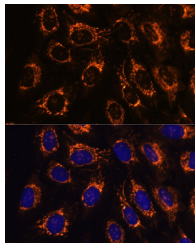
<b>Product Type</b>	Primary antibodies
<b>Short Description</b>	
<b>Applications</b>	WB/IHC-P/IF/ICC/ELISA
<b>Host/Source</b>	Rabbit
<b>Reactivity</b>	Human/Mouse/Rat

### PRODUCT PROPERTIES

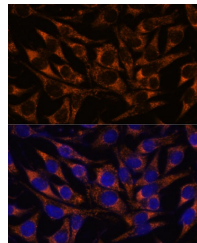
<b>Clonality</b>	Polyclonal
<b>Clone ID</b>	
<b>Concentration</b>	Lot specific
<b>Conjugation</b>	Unconjugated
<b>Purification</b>	Affinity purification
<b>Dilution</b>	WB:1:500-1:2000
<b>Range</b>	IHC-P:1:50-1:200 IF/ICC:1:50-1:200 ELISA:Recommended starting concentration is 1 µg/mL. Please optimize the concentration based on your specific assay requirements.
<b>Formulation</b>	PBS with 0.05% Proclin300, 50% Glycerol, pH 7.3.
<b>Isotype</b>	IgG
<b>Storage</b>	Store at -20°C for up to 1 year from the date of receipt, and avoid repeat freeze-thaw cycles.
<b>Instruction</b>	

### TARGET INFORMATION

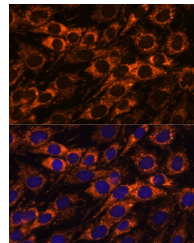
<b>Gene ID</b>	10449
<b>Gene Symbol</b>	ACAA2
<b>Uniprot ID</b>	THIM_HUMAN
<b>Immunogen</b>	
<b>Immunogen Region</b>	1-250
<b>Specificity</b>	Recombinant fusion protein containing a sequence corresponding to amino acids 1-250 of human ACAA2 (NP_006102.2).
<b>Immunogen Sequence</b>	MALLRGVVFVAAKRTPFQAY GGLLKDFATDLSEFAAKAA LSAGKVSPETVDSVIMGNVL QSSSDAIYLARHVGLRVGIP KETPALTINRLCGSGFQSIV NGCQEICVKEAEVVLGGTE SMSQAPYCVRNVRFGTKLGS DIKLEDSLWVSLTDQHVQLP MAMTAENLAVKHKISREED KYALQSQRWKAANDAGYFN DEMAPIEVKTKKGKQTMQVD EHARPQTTLQLQKLPPVF



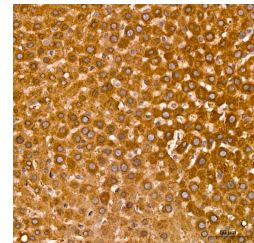
Immunofluorescence analysis of U-2 OS cells using ACAA2 Rabbit polyclonal antibody (STJ118223) at dilution of 1:100. Secondary antibody: Cy3 Goat Anti-Rabbit IgG (H+L) at 1:500 dilution. Blue: DAPI for nuclear staining.



Immunofluorescence analysis of L929 cells using ACAA2 Rabbit polyclonal antibody (STJ118223) at dilution of 1:100. Secondary antibody: Cy3 Goat Anti-Rabbit IgG (H+L) at 1:500 dilution. Blue: DAPI for nuclear staining.



Immunofluorescence analysis of C6 cells using ACAA2 Rabbit polyclonal antibody (STJ118223) at dilution of 1:100. Secondary antibody: Cy3 Goat Anti-Rabbit IgG (H+L) at 1:500 dilution. Blue: DAPI for nuclear staining.



Immunohistochemistry analysis of ACAA2 in paraffin-embedded rat liver tissue using ACAA2 Rabbit polyclonal antibody (STJ118223) at a dilution of 1:100 (40x lens). High pressure antigen retrieval was performed with 0.01 M citrate buffer (pH 6.0) prior to immunohistochemistry staining.