

Anti-TBRG4 antibody (382-631) (STJ118198)

STJ118198

GENERAL INFORMATION

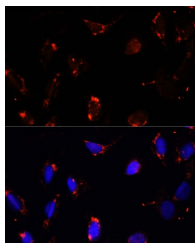
Product Type	Primary antibodies
Short Description	
Applications	WB/IF/ICC/ELISA
Host/Source	Rabbit
Reactivity	Human/Mouse/Rat

PRODUCT PROPERTIES

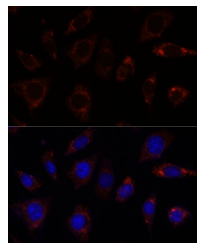
Clonality	Polyclonal
Clone ID	
Concentration	Lot specific
Conjugation	Unconjugated
Purification	Affinity purification
Dilution	WB:1:500-1:2000
Range	IF/CC:1:50-1:200
	ELISA:Recommended starting concentration is 1 Mu g/mL. Please optimize the concentration based on your specific assay requirements.
Formulation	PBS with 0.05% Proclin300, 50% Glycerol, pH 7.3.
Isotype	IgG
Storage Instruction	Store at -20°C for up to 1 year from the date of receipt, and avoid repeat freeze-thaw cycles.

TARGET INFORMATION

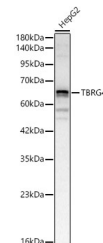
Gene ID	9238
Gene Symbol	TBRG4
Uniprot ID	FAKD4_HUMAN
Immunogen	
Immunogen Region	382-631
Specificity	Recombinant fusion protein containing a sequence corresponding to amino acids 382-631 of human TBRG4 (NP_004740.2).
Immunogen Sequence	HPDQEDQFFSLVHEKLGSEL PGLPALQVDLVWALCVLQQ AREAELQAVLHPEFHIQFLG GKSQKDQNTFQKLLHINATA LLEYPEYSGPLLPASAVAPG PSALDRKVTPLQKELQETLK GLLGSADKGSLEVATQYGVV LDAEVLLSDGFEFLPVRDFV APHLAQPTGSQSPPPGSKRL AFLRWEFPNFNRSKDLLGR FVLARRHIVAAGFLIVDVPF YEWLELKSEWQKGAYLKDK



Immunofluorescence analysis of U-2 OS cells using TBRG4 antibody (STJ118198) at dilution of 1:100. Blue: DAPI for nuclear staining.



Immunofluorescence analysis of L929 cells using TBRG4 antibody (STJ118198) at dilution of 1:100. Blue: DAPI for nuclear staining.



Western blot analysis of HepG2, using TBRG4 Rabbit polyclonal antibody (STJ118198) at 1:2000 dilution. Secondary antibody: HRP Goat Anti-Rabbit IgG (H+L) (STJS000856) at 1:10000 dilution. Lysates/proteins: 25ug per lane. Blocking buffer: 3% nonfat dry milk in TBST. Detection: ECL Basic Kit. Exposure time: 30s.

This product is suitable for in-vitro studies under the RESEARCH USE ONLY [RUO] licence. This product must not be used as for diagnostic or other medical purposes.
St John's Laboratory Ltd, Knowledge Dock Business Centre, University Way, London, E16 2RD | Tel: 0208 223 3081