

Anti-RPS6KA1 antibody (C-Term) (STJ118164)
STJ118164

GENERAL INFORMATION

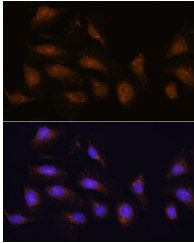
Product Type	Primary antibodies
Short Description	
Applications	WB/IHC-P/IF/ICC/ELISA
Host/Source	Rabbit
Reactivity	Human/Mouse/Rat

PRODUCT PROPERTIES

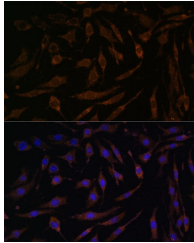
Clonality	Polyclonal
Clone ID	
Concentration	Lot specific
Conjugation	Unconjugated
Purification	Affinity purification
Dilution	WB:1:500-1:2000
Range	IHC-P:1:100-1:200 IF/ICC:1:50-1:200 ELISA:Recommended starting concentration is 1 μ g/mL. Please optimize the concentration based on your specific assay requirements.
Formulation	PBS with 0.01% Thimerosal, 50% Glycerol, pH 7.3.
Isotype	IgG
Storage	Store at -20°C for up to 1 year from the date of receipt, and avoid repeat freeze-thaw cycles.
Instruction	

TARGET INFORMATION

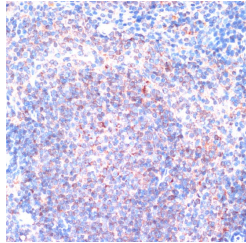
Gene ID	6195
Gene Symbol	RPS6KA1
Uniprot ID	KS6A1_HUMAN
Immunogen	
Immunogen Region	C-Term
Specificity	A synthetic peptide corresponding to a sequence within amino acids 600 to the C-terminus of human p90Rsk/RSK1/RPS6KA1 (NP_002944.2).
Immunogen Sequence	LGILLYTMLAGYTPFANGPS DTPPEILTRIGSGKFTLSGG NWNVTSETAKDLVSKMLHVD PHQRLTAQVLQHPWVTQKD KLPQSQLSHQDLQLVKGAMA ATYSALNSSKPTPLKPIES SILAQRVRVKLPSTTL



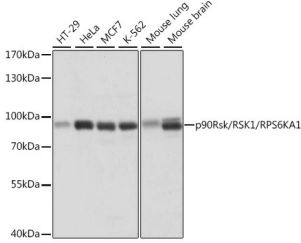
Immunofluorescence analysis of U-2 OS cells using p90Rsk/RSK1/RPS6KA1 Rabbit polyclonal antibody (STJ118164) at dilution of 1:100. Secondary antibody: Cy3 Goat Anti-Rabbit IgG (H+L) at 1:500 dilution. Blue: DAPI for nuclear staining.



Immunofluorescence analysis of L929 cells using p90Rsk/RSK1/RPS6KA1 Rabbit polyclonal antibody (STJ118164) at dilution of 1:100. Secondary antibody: Cy3 Goat Anti-Rabbit IgG (H+L) at 1:500 dilution. Blue: DAPI for nuclear staining.



Immunohistochemistry analysis of p90Rsk/RSK1/RPS6KA1 in paraffin-embedded mouse spleen using p90Rsk/RSK1/RPS6KA1 Rabbit polyclonal antibody (STJ118164) at dilution of 1:100 (40x lens). Perform microwave antigen retrieval with 10 mM PBS buffer pH 7.2 before commencing with immunohistochemistry staining protocol.



Western blot analysis of various lysates using p90Rsk/RSK1/RPS6KA1 Rabbit polyclonal antibody (STJ118164) at 1:1000 dilution. Secondary antibody: HRP Goat Anti-Rabbit IgG (H+L) (STJS000856) at 1:10000 dilution. Lysates/proteins: 25 μ g per lane. Blocking buffer: 3% nonfat dry milk in TBST. Detection: ECL Basic Kit. Exposure time: 1s.

This product is suitable for in-vitro studies under the RESEARCH USE ONLY [RUO] licence. This product must not be used as for diagnostic or other medical purposes.
St John's Laboratory Ltd, Knowledge Dock Business Centre, University Way, London, E16 2RD | Tel: 0208 223 3081