

Anti-NHLH1 antibody (1-60) (STJ118141)
STJ118141

GENERAL INFORMATION

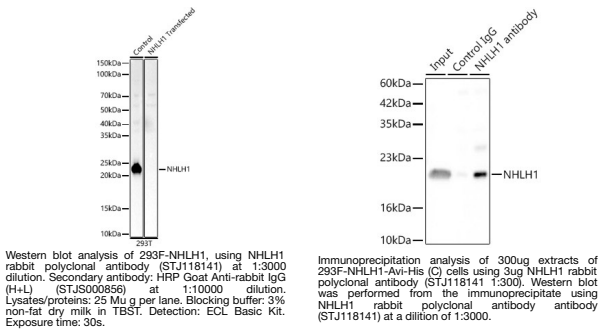
Product Type	Primary antibodies
Short Description	
Applications	WB/IF/ICC/IP/ELISA
Host/Source	Rabbit
Reactivity	Human

PRODUCT PROPERTIES

Clonality	Polyclonal
Clone ID	
Concentration	Lot specific
Conjugation	Unconjugated
Purification	Affinity purification
Dilution Range	WB:1:1000-1:5000 IF/ICC:1:100-1:500 IP:0.5 Mu g-4 Mu g antibody for 200 Mu g-400 Mu g extracts of whole cells ELISA:Recommended starting concentration is 1 Mu g/mL. Please optimize the concentration based on your specific assay requiremen
Formulation	PBS with 0.05% Proclin300, 50% Glycerol, pH 7.3.
Isotype	IgG
Storage Instruction	Store at -20°C for up to 1 year from the date of receipt, and avoid repeat freeze-thaw cycles.

TARGET INFORMATION

Gene ID	4807
Gene Symbol	NHLH1
Uniprot ID	HEN1_HUMAN
Immunogen	
Immunogen Region	1-60
Specificity	Recombinant fusion protein containing a sequence corresponding to amino acids 1-60 of human NHLH1 (NP_005589.1).
Immunogen Sequence	MMLNSDTMELDLPPTHSETE SGFSDCGGGAGPDGAGPGGP GGGQARGPEPGEPRKDLQH



This product is suitable for in-vitro studies under the RESEARCH USE ONLY [RUO] licence. This product must not be used as for diagnostic or other medical purposes.
St John's Laboratory Ltd, Knowledge Dock Business Centre, University Way, London, E16 2RD | Tel: 0208 223 3081