

Anti-CDC42 antibody (1-186) (STJ118103)

STJ118103

GENERAL INFORMATION

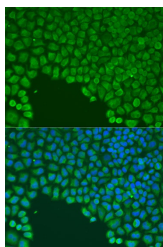
Product Type	Primary antibodies
Short Description	
Applications	IF/ICC/ELISA
Host/Source	Rabbit
Reactivity	Human

PRODUCT PROPERTIES

Clonality	Polyclonal
Clone ID	
Concentration	Lot specific
Conjugation	Unconjugated
Purification	Affinity purification
Dilution	IF/ICC:1:50-1:200
Range	ELISA:Recommended starting concentration is 1 µg/mL. Please optimize the concentration based on your specific assay requirements.
Formulation	PBS with 0.02% Sodium Azide, 50% Glycerol, pH 7.3.
Isotype	IgG
Storage	Store at -20°C for up to 1 year from the date of receipt, and avoid repeat freeze-thaw cycles.
Instruction	

TARGET INFORMATION

Gene ID	998
Gene Symbol	CDC42
Uniprot ID	CDC42_HUMAN
Immunogen	
Immunogen Region	1-186
Specificity	Recombinant fusion protein containing a sequence corresponding to amino acids 1-186 of human CDC42 (NP_001782.1).
Immunogen Sequence	MQTIKCVVVGDAVGKTCLL ISYTTNKFPEYVPTVFDNY AVTVMIGGEPYTLGLFDTAG QEDYDRLRPLSYPTDVFVLFV CFSVVSPSSFENVKEKWPE ITHHCPKTPFLLVGTQIDLR DDPSTIEKLAKNKQKPITPE TAEKLARDLKAVKYVECSAL TQKGLKNVFDEILAALPEP EPKKSRR



Immunofluorescence analysis of U2OS cells using CDC42 antibody (STJ118103) at dilution of 1:100. Blue: DAPI for nuclear staining.