

Anti-SLC25A5 antibody (199-210) (STJ118086)

STJ118086

GENERAL INFORMATION

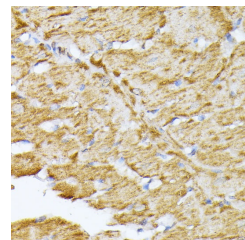
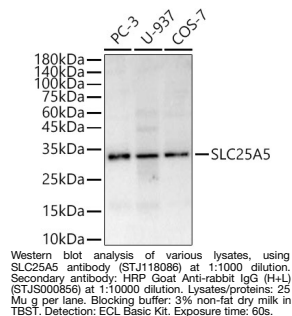
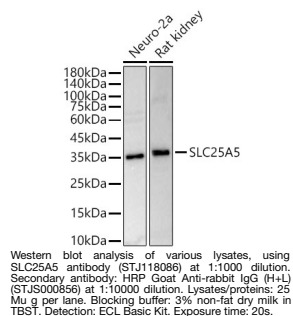
Product Type	Primary antibodies
Short Description	
Applications	WB/IHC-P/IF/ICC/ELISA
Host/Source	Rabbit
Reactivity	Human/Mouse/Rat/Monkey

PRODUCT PROPERTIES

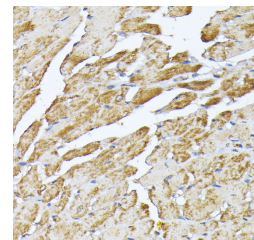
Clonality	Polyclonal
Clone ID	
Concentration	Lot specific
Conjugation	Unconjugated
Purification	Affinity purification
Dilution	WB:1:500-1:1000
Range	IHC-P:1:50-1:200 IF/ICC:1:50-1:200 ELISA:Recommended starting concentration is 1 μ g/mL. Please optimize the concentration based on your specific assay requirements.
Formulation	PBS with 0.02% Sodium Azide, 50% Glycerol, pH 7.3.
Isotype	IgG
Storage	Store at -20°C for up to 1 year from the date of receipt, and avoid repeat freeze-thaw cycles.
Instruction	

TARGET INFORMATION

Gene ID	292
Gene Symbol	SLC25A5
Uniprot ID	ADT2_HUMAN
Immunogen	
Immunogen Region	199-210
Specificity	A synthetic peptide corresponding to a sequence within amino acids 151-250 of human ANT2/SLC25A5 (NP_001143.2).
Immunogen Sequence	EREFRLGDCLVKIYKSDGI KGLYQGFNVSVQGIIYRAA YFGIYDTAKGMLPDPKNTHI VISWMIAQTVTAVAGLTSYP FDTVRRRMMMQSGRKGTDIM YTGTLDCWRKIARDEGGKAF FKGAWSNVLRGMGGAFLVL YDEIKKYT



Immunohistochemistry analysis of paraffin-embedded rat heart using SLC25A5 antibody (STJ118086) at dilution of 1:100 (40x lens). Perform microwave antigen retrieval with 10 mM PBS buffer pH 7.2 before commencing with immunohistochemistry staining protocol.



Immunohistochemistry analysis of paraffin-embedded mouse heart using SLC25A5 antibody (STJ118086) at dilution of 1:100 (40x lens). Perform microwave antigen retrieval with 10 mM PBS buffer pH 7.2 before commencing with immunohistochemistry staining protocol.

This product is suitable for in-vitro studies under the RESEARCH USE ONLY [RUO] licence. This product must not be used as for diagnostic or other medical purposes.
St John's Laboratory Ltd, Knowledge Dock Business Centre, University Way, London, E16 2RD | Tel: 0208 223 3081