

Anti-NLRP6 antibody (1-110) (STJ118076)

STJ118076

GENERAL INFORMATION

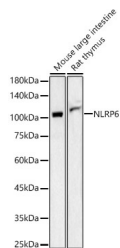
Product Type	Primary antibodies
Short Description	
Applications	WB/ELISA
Host/Source	Rabbit
Reactivity	Human/Mouse/Rat

PRODUCT PROPERTIES

Clonality	Polyclonal
Clone ID	
Concentration	Lot specific
Conjugation	Unconjugated
Purification	Affinity purification
Dilution Range	WB:1:100-1:500 ELISA: Recommended starting concentration is 1 µg/mL. Please optimize the concentration based on your specific assay requirements.
Formulation	PBS with 0.05% Proclin300, 50% Glycerol, pH 7.3.
Isotype	IgG
Storage	Store at -20°C for up to 1 year from the date of receipt, and avoid repeat freeze-thaw cycles.
Instruction	

TARGET INFORMATION

Gene ID	171389
Gene Symbol	NLRP6
Uniprot ID	NLRP6_HUMAN
Immunogen	
Immunogen Region	1-110
Specificity	A synthetic peptide corresponding to a sequence within amino acids 1-110 of human NLRP6 (NP_612202.2). MDQPEAPCSSTGPRLAVARE LLLAALEELSQEQLKFRHK LRDVGPDGRSIPWGRLERAD AVDLAEQLAQFYGPEPALEV
Immunogen Sequence	ARKTLKRADARDVAAQLQER RLQRLGLGSG



Western blot analysis of various lysates, using NLRP6 antibody (STJ118076) at 1:400 dilution. Secondary antibody: HRP Goat Anti-Rabbit IgG (H+L) (STJ5000856) at 1:10000 dilution. Lysates/proteins: 25 µg per lane. Blocking buffer: 3% nonfat dry milk in TBST. Detection: ECL Basic Kit. Exposure time: 180s.

This product is suitable for in-vitro studies under the RESEARCH USE ONLY [RUO] licence. This product must not be used as for diagnostic or other medical purposes.
St John's Laboratory Ltd, Knowledge Dock Business Centre, University Way, London, E16 2RD | Tel: 0208 223 3081