

Anti-GLI3 antibody (681-788) (STJ118062)

STJ118062

GENERAL INFORMATION

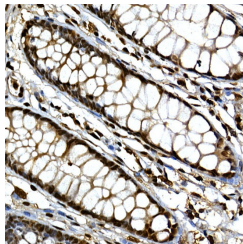
Product Type	Primary antibodies
Short Description	
Applications	IHC-P/ELISA
Host/Source	Rabbit
Reactivity	Human/Mouse/Rat

PRODUCT PROPERTIES

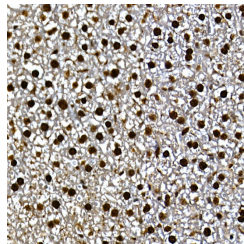
Clonality	Polyclonal
Clone ID	
Concentration	Lot specific
Conjugation	Unconjugated
Purification	Affinity purification
Dilution Range	IHC-P:1:50-1:200 ELISA:Recommended starting concentration is 1 μ g/mL. Please optimize the concentration based on your specific assay requirements.
Formulation	PBS with 0.05% Proclin300, 50% Glycerol, pH 7.3.
Isotype	IgG
Storage	Store at -20°C for up to 1 year from the date of receipt, and avoid repeat freeze-thaw cycles.
Instruction	

TARGET INFORMATION

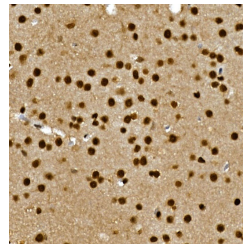
Gene ID	2737
Gene Symbol	GLI3
Uniprot ID	GLI3_HUMAN
Immunogen	
Immunogen Region	681-788
Specificity	A synthetic peptide corresponding to a sequence within amino acids 681-788 of human GLI3 (NP_000159.3).
Immunogen Sequence	NTTSKREECLQVKTVKAEKP MTSQSPGGQSSCSSQQSPI SNYSNSGLELPLTDGGSIGD LSAIDETPIMDSTISTATTA LALQARRNPAGTKWMEHVKL ERLKQVNG



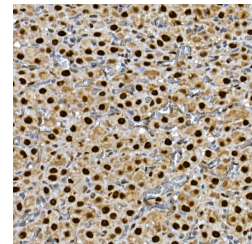
Immunohistochemistry analysis of paraffin-embedded human colon using GLI3 rabbit polyclonal antibody (STJ118062) at dilution of 1:100 (40x lens). Perform high pressure antigen retrieval with 10 mM citrate buffer pH 6.0 before commencing with immunohistochemistry staining protocol.



Immunohistochemistry analysis of paraffin-embedded mouse liver using GLI3 rabbit polyclonal antibody (STJ118062) at dilution of 1:100 (40x lens). Perform high pressure antigen retrieval with 10 mM citrate buffer pH 6.0 before commencing with immunohistochemistry staining protocol.



Immunohistochemistry analysis of paraffin-embedded rat brain using GLI3 rabbit polyclonal antibody (STJ118062) at dilution of 1:100 (40x lens). Perform high pressure antigen retrieval with 10 mM citrate buffer pH 6.0 before commencing with immunohistochemistry staining protocol.



Immunohistochemistry analysis of paraffin-embedded rat ovary using GLI3 rabbit polyclonal antibody (STJ118062) at dilution of 1:100 (40x lens). Perform high pressure antigen retrieval with 10 mM citrate buffer pH 6.0 before commencing with immunohistochemistry staining protocol.

This product is suitable for in-vitro studies under the RESEARCH USE ONLY [RUO] licence. This product must not be used as for diagnostic or other medical purposes.
St John's Laboratory Ltd, Knowledge Dock Business Centre, University Way, London, E16 2RD | Tel: 0208 223 3081