

Anti-DNASE1L3 antibody (21-281) (STJ118057)

STJ118057

GENERAL INFORMATION

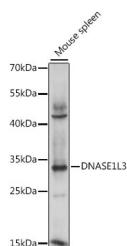
Product Type	Primary antibodies
Short Description	
Applications	WB/ELISA
Host/Source	Rabbit
Reactivity	Mouse

PRODUCT PROPERTIES

Clonality	Polyclonal
Clone ID	
Concentration	Lot specific
Conjugation	Unconjugated
Purification	Affinity purification
Dilution	WB:1:500-1:2000
Range	ELISA:Recommended starting concentration is 1 Mu g/mL. Please optimize the concentration based on your specific assay requirements.
Formulation	PBS with 0.01% Thimerosal, 50% Glycerol, pH 7.3.
Isotype	IgG
Storage	Store at -20°C for up to 1 year from the date of receipt, and avoid repeat freeze-thaw cycles.
Instruction	

TARGET INFORMATION

Gene ID	1776
Gene Symbol	DNASE1L3
Uniprot ID	DNLSL3_HUMAN
Immunogen	
Immunogen Region	21-281
Specificity	Recombinant fusion protein containing a sequence corresponding to amino acids 21-281 of human DNASE1L3 (NP_004935.1).
Immunogen Sequence	MRICSFNVRSFGESKQEDKN AMDVIVKVIKRCIILVMEI KDSNNRICPILMEKLNRSR RGITYNYVISSRLGRNTYKE QYAFLYKEKLVSVKRSYHYH DYQDGDADVSREPFVWFQ SPHTAVKDFVIPLHTTPET SVKEIDELVEVYTDVKHRWK AENFIFMGDFNAGCSYVPKK AWKNIRLRTDPRFVWLIGDQ EDTTVKKSTNCAYDRIVLRG QEIVSSVVPKNSVDFDQK



Western blot analysis of extracts of mouse spleen, using DNASE1L3 antibody (STJ118057) at 1:1000 dilution. Secondary antibody: HRP Goat Anti-rabbit IgG (H+L) at 1:10000 dilution. Lysates/proteins: 25ug per lane. Blocking buffer: 3% nonfat dry milk in TBST. Detection: ECL Basic Kit. Exposure time: 90s.

This product is suitable for in-vitro studies under the RESEARCH USE ONLY [RUO] licence. This product must not be used as for diagnostic or other medical purposes.
St John's Laboratory Ltd, Knowledge Dock Business Centre, University Way, London, E16 2RD | Tel: 0208 223 3081