

## Anti-Acetyl-ACACA antibody (2266-2346) (STJ118055)

STJ118055

### GENERAL INFORMATION

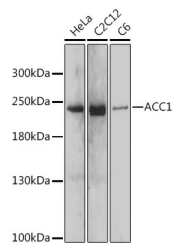
<b>Product Type</b>	Primary antibodies
<b>Short Description</b>	
<b>Applications</b>	WB/IHC-P/IF/ICC/IP/ELISA
<b>Host/Source</b>	Rabbit
<b>Reactivity</b>	Human/Mouse/Rat

### PRODUCT PROPERTIES

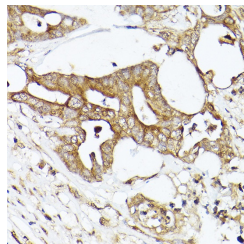
<b>Clonality</b>	Polyclonal
<b>Clone ID</b>	
<b>Concentration</b>	Lot specific
<b>Conjugation</b>	Unconjugated
<b>Purification</b>	Affinity purification
<b>Dilution Range</b>	WB:1:500-1:2000 IHC-P:1:50-1:200 IF/ICC:1:50-1:200 IP:0.5 Mu g-4 Mu g antibody for 200 Mu g-400 Mu g extracts of whole cells ELISA:Recommended starting concentration is 1 Mu g/mL. Please optimize the concentration based on your specif
<b>Formulation</b>	PBS with 0.05% Proclin300, 50% Glycerol, pH 7.3.
<b>Isotype</b>	IgG
<b>Storage Instruction</b>	Store at -20°C for up to 1 year from the date of receipt, and avoid repeat freeze-thaw cycles.

### TARGET INFORMATION

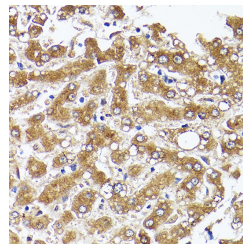
<b>Gene ID</b>	31
<b>Gene Symbol</b>	ACACA
<b>Uniprot ID</b>	ACACA_HUMAN
<b>Immunogen</b>	
<b>Immunogen Region</b>	2266-2346
<b>Specificity</b>	Recombinant fusion protein containing a sequence corresponding to amino acids 2266-2346 of human ACC1 (NP_942133.1).
<b>Immunogen Sequence</b>	NNKDLAEWLEKQLTEEDGVH SVIEENKICISRDYVLKQIR SLVQANPEVAMDSIIHMTQH ISPTQRAEVIRILSTMDSPS T



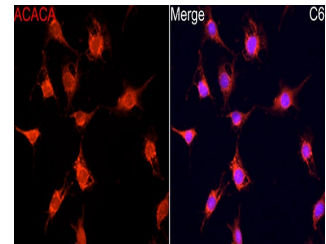
Western blot analysis of extracts of various cell lines, using ACC1 antibody (STJ118055) at 1:1000 dilution. Secondary antibody: HRP Goat Anti-rabbit IgG (H+L) (STJS000856) at 1:10000 dilution. Lysates/proteins: 25 Mu g per lane. Blocking buffer: 3% non-fat dry milk in TBST. Detection: ECL Basic kit. Exposure time: 30s.



Immunohistochemistry analysis of paraffin-embedded human colon carcinoma using ACC1 rabbit polyclonal antibody (STJ118055) at dilution of 1:50 (40x lens). Perform high pressure antigen retrieval with 10 mM citrate buffer pH 6. 0 before commencing with immunohistochemistry staining protocol.



Immunohistochemistry analysis of paraffin-embedded human liver using ACC1 rabbit polyclonal antibody (STJ118055) at dilution of 1:50 (40x lens). Perform high pressure antigen retrieval with 10 mM citrate buffer pH 6. 0 before commencing with immunohistochemistry staining protocol.



Immunofluorescence analysis of C6 using ACC1 rabbit polyclonal antibody (STJ118055) at dilution of 1:100 (40x lens). Blue: DAPI for nuclear staining.

This product is suitable for in-vitro studies under the RESEARCH USE ONLY [RUO] licence. This product must not be used as for diagnostic or other medical purposes.

St John's Laboratory Ltd, Knowledge Dock Business Centre, University Way, London, E16 2RD | Tel: 0208 223 3081