

Anti-CHAC1 antibody (1-222) (STJ118037)

STJ118037

GENERAL INFORMATION

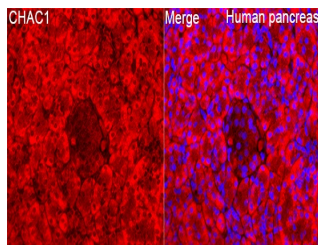
Product Type	Primary antibodies
Short Description	
Applications	WB/IHC-P/IF/ICC/ELISA
Host/Source	Rabbit
Reactivity	Human/Mouse/Rat

PRODUCT PROPERTIES

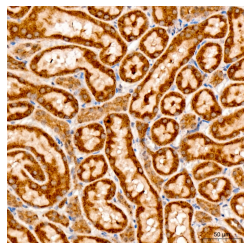
Clonality	Polyclonal
Clone ID	
Concentration	Lot specific
Conjugation	Unconjugated
Purification	Affinity purification
Dilution	WB:1:500-1:1000
Range	IHC-P:1:50-1:200 IF/ICC:1:50-1:200 ELISA:Recommended starting concentration is 1 µg/mL. Please optimize the concentration based on your specific assay requirements.
Formulation	PBS with 0.05% Proclin300, 50% Glycerol, pH 7.3.
Isotype	IgG
Storage	Store at -20°C for up to 1 year from the date of receipt, and avoid repeat freeze-thaw cycles.
Instruction	

TARGET INFORMATION

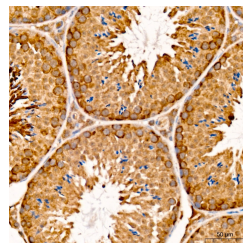
Gene ID	79094
Gene Symbol	CHAC1
Uniprot ID	CHAC1_HUMAN
Immunogen	
Region	1-222
Specificity	Recombinant fusion protein containing a sequence corresponding to amino acids 1-222 of human CHAC1 (NP_077016.3).
Immunogen Sequence	MKQESAAPNTPTTSQSPTPS AQFPRNDGDPQALWIFGYGS LVWRPDAFYSDSRVGFVRGY SRRFWQGDTFHFGSDKMPGR VVTLLDHEGCTWGVAYVQVQ GEQVSKALKYLNREAVLGG YDTKEVTFYPQDAPDQPLKA LAYVATPQNPGYLGPAPEEA IATQLACRGGFSGHNLEYLL RLADFMQLCGPQAQDEHLAA IVDVAVGTMLPCFCFTEQALA LV



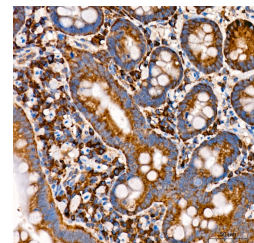
Immunofluorescence analysis of human pancreas tissue using CHAC1 Rabbit polyclonal antibody (STJ118037) at a dilution of 1:100 (40x lens). Secondary antibody: Cy3 Goat Anti-Rabbit IgG (H+L) at 1:500 dilution. Blue: DAPI for nuclear staining. Perform high pressure antigen retrieval with 0.01 M citrate buffer (pH 6.0) prior to IF staining.



Immunohistochemistry analysis of CHAC1 in paraffin-embedded rat kidney tissue using CHAC1 Rabbit polyclonal antibody (STJ118037) at a dilution of 1:100 (40x lens). High pressure antigen retrieval was performed with 0.01 M citrate buffer (pH 6.0) prior to immunohistochemistry staining.



Immunohistochemistry analysis of CHAC1 in paraffin-embedded mouse testis tissue using CHAC1 Rabbit polyclonal antibody (STJ118037) at a dilution of 1:100 (40x lens). High pressure antigen retrieval was performed with 0.01 M citrate buffer (pH 6.0) prior to immunohistochemistry staining.



Immunohistochemistry analysis of CHAC1 in paraffin-embedded human small intestine tissue using CHAC1 Rabbit polyclonal antibody (STJ118037) at a dilution of 1:100 (40x lens). High pressure antigen retrieval was performed with 0.01 M citrate buffer (pH 6.0) prior to immunohistochemistry staining.

This product is suitable for in-vitro studies under the RESEARCH USE ONLY [RUO] licence. This product must not be used as for diagnostic or other medical purposes.
St John's Laboratory Ltd, Knowledge Dock Business Centre, University Way, London, E16 2RD | Tel: 0208 223 3081