

Anti-PPARGC1A antibody (610-798) (STJ118021)

STJ118021

GENERAL INFORMATION

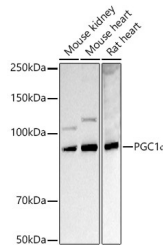
Product Type	Primary antibodies
Short Description	
Applications	WB/IHC-P/IF/ICC/ELISA
Host/Source	Rabbit
Reactivity	Human/Mouse/Rat

PRODUCT PROPERTIES

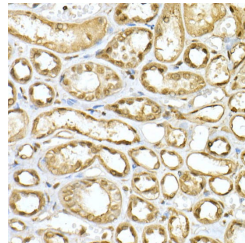
Clonality	Polyclonal
Clone ID	
Concentration	Lot specific
Conjugation	Unconjugated
Purification	Affinity purification
Dilution Range	WB:1:500-1:1000 IHC-P:1:50-1:200 IF/ICC:1:50-1:200 ELISA:Recommended starting concentration is 1 Mu g/mL. Please optimize the concentration based on your specific assay requirements.
Formulation	PBS with 0.09% Sodium Azide, 50% Glycerol, pH 7.3.
Isotype	IgG
Storage Instruction	Store at -20°C for up to 1 year from the date of receipt, and avoid repeat freeze-thaw cycles.

TARGET INFORMATION

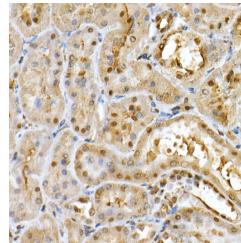
Gene ID	10891
Gene Symbol	PPARGC1A
Uniprot ID	PRGC1_HUMAN
Immunogen	
Immunogen Region	610-798
Specificity	Recombinant fusion protein containing a sequence corresponding to amino acids 610-710 of human PGC1 Alpha (NP_037393.1).
Immunogen Sequence	HRTHRNSPLYVRSRSPYS RRPYDSYEEYQHERLKREE YRREYEKRESERAKQRERQR QKAIEERRVIYVGKIRPDDT RTELRDRFEVFGIEECTVN L



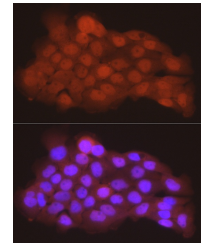
Western blot analysis of extracts of various cell lines, using PGC1 Alpha antibody (STJ118021) at 1:1000 dilution. Secondary antibody: HRP Goat Anti-rabbit IgG (H+L) (STJ500856) at 1:10000 dilution. Lysates/proteins: 25 Mu g per lane. Blocking buffer: 3% non-fat dry milk in TBST. Detection: ECL Basic Kit. Exposure time: 5s.



Immunohistochemistry analysis of paraffin-embedded human kidney using PGC1 Alpha rabbit polyclonal antibody (STJ118021) at dilution of 1:20 (40x lens). Perform high pressure antigen retrieval with 10 mM citrate buffer pH 6, 0 before commencing with immunohistochemistry staining protocol.



Immunohistochemistry analysis of paraffin-embedded rat kidney using PGC1 Alpha rabbit polyclonal antibody (STJ118021) at dilution of 1:20 (40x lens). Perform high pressure antigen retrieval with 10 mM citrate buffer pH 6, 0 before commencing with immunohistochemistry staining protocol.



Immunofluorescence analysis of A-431 cells using PGC1 Alpha rabbit polyclonal antibody (STJ118021) at dilution of 1:100 (40x lens). Blue: DAPI for nuclear staining.

This product is suitable for in-vitro studies under the RESEARCH USE ONLY [RUO] licence. This product must not be used as for diagnostic or other medical purposes.

St John's Laboratory Ltd, Knowledge Dock Business Centre, University Way, London, E16 2RD | Tel: 0208 223 3081