

Anti-LRRK2 antibody (750-2527) (STJ117998)
STJ117998

GENERAL INFORMATION

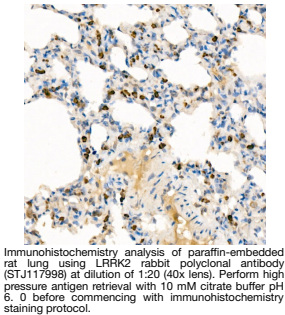
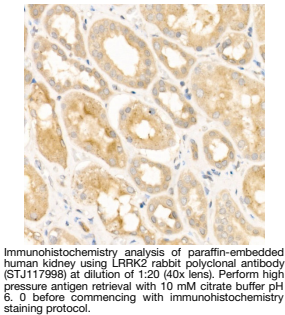
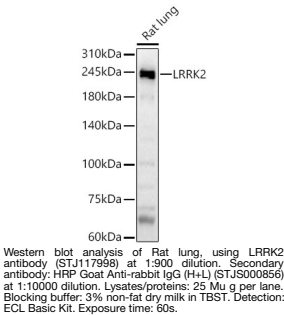
| | |
|--------------------------|--------------------|
| Product Type | Primary antibodies |
| Short Description | |
| Applications | WB/IHC-P/ELISA |
| Host/Source | Rabbit |
| Reactivity | Human/Mouse/Rat |

PRODUCT PROPERTIES

| | |
|----------------------------|--|
| Clonality | Polyclonal |
| Clone ID | |
| Concentration | Lot specific |
| Conjugation | Unconjugated |
| Purification | Affinity purification |
| Dilution | WB:1:500-1:1000 |
| Range | IHC-P:1:50-1:200 ELISA:Recommended starting concentration is 1 μ g/mL. Please optimize the concentration based on your specific assay requirements. |
| Formulation | PBS with 0.02% Sodium Azide, 50% Glycerol, pH 7.3. |
| Isotype | IgG |
| Storage Instruction | Store at -20°C for up to 1 year from the date of receipt, and avoid repeat freeze-thaw cycles. |

TARGET INFORMATION

| | |
|---------------------------|--|
| Gene ID | 120892 |
| Gene Symbol | LRRK2 |
| Uniprot ID | LRRK2_HUMAN |
| Immunogen | |
| Immunogen Region | 750-2527 |
| Specificity | Recombinant fusion protein containing a sequence corresponding to amino acids 750-910 of human LRRK2 (NP_940980.3). |
| Immunogen Sequence | EKESPPKLVELLLNSGSREQ DVRKALTISIGKGD SQIISL LLRRLALDVANNSICLGGFC IGKVEPSWLGPLFPDKTSNL RKQTNIASLTARMVIRYQMK SAVEEGTAGSGDGNFSEDLV SKFDEWTFIPDSSMDSVFAQ SDDL DSEGSEGSFLVKKKSN S |



This product is suitable for in-vitro studies under the RESEARCH USE ONLY [RUO] licence. This product must not be used as for diagnostic or other medical purposes.
St John's Laboratory Ltd, Knowledge Dock Business Centre, University Way, London, E16 2RD | Tel: 0208 223 3081