

## Anti-BIRC3 antibody (100-604) (STJ117997)

STJ117997

### GENERAL INFORMATION

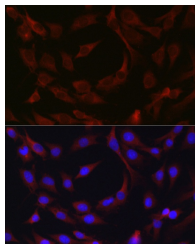
<b>Product Type</b>	Primary antibodies
<b>Short Description</b>	
<b>Applications</b>	WB/IHC-P/IF/ICC/ELISA
<b>Host/Source</b>	Rabbit
<b>Reactivity</b>	Human/Mouse/Rat

### PRODUCT PROPERTIES

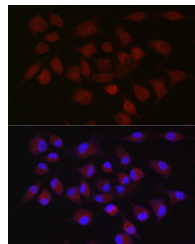
<b>Clonality</b>	Polyclonal
<b>Clone ID</b>	
<b>Concentration</b>	Lot specific
<b>Conjugation</b>	Unconjugated
<b>Purification</b>	Affinity purification
<b>Dilution Range</b>	WB:1:100-1:500 IHC-P:1:50-1:200 IF/ICC:1:50-1:200 ELISA:Recommended starting concentration is 1 Mu g/mL. Please optimize the concentration based on your specific assay requirements.
<b>Formulation</b>	PBS with 0.09% Sodium Azide, 50% Glycerol, pH 7.3.
<b>Isotype</b>	IgG
<b>Storage Instruction</b>	Store at -20°C for up to 1 year from the date of receipt, and avoid repeat freeze-thaw cycles.

### TARGET INFORMATION

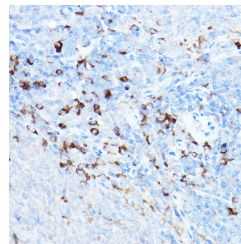
<b>Gene ID</b>	330
<b>Gene Symbol</b>	BIRC3
<b>Uniprot ID</b>	BIRC3_HUMAN
<b>Immunogen</b>	
<b>Immunogen Region</b>	100-604
<b>Specificity</b>	Recombinant fusion protein containing a sequence corresponding to amino acids 100-130 of human cIAP2 (NP_001156.1).
<b>Immunogen Sequence</b>	NSVNNLEATSQPTFPSSVTN STHSLLPGTEN



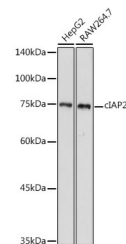
Immunofluorescence analysis of C6 cells using cIAP2 Rabbit polyclonal antibody (STJ117997) at dilution of 1:50 (40x lens). Blue: DAPI for nuclear staining.



Immunofluorescence analysis of A-549 cells using cIAP2 Rabbit polyclonal antibody (STJ117997) at dilution of 1:50 (40x lens). Blue: DAPI for nuclear staining.



Immunohistochemistry analysis of paraffin-embedded rat spleen using cIAP2 Rabbit polyclonal antibody (STJ117997) at dilution of 1:20 (40x lens). Perform high pressure antigen retrieval with 10 mM citrate buffer pH 6, 0 before commencing with immunohistochemistry staining protocol.



Western blot analysis of extracts of various cell lines, using cIAP2 antibody (STJ117997) at 1:500 dilution. Secondary antibody: HRP Goat Anti-Rabbit IgG (H+L) (STJ5000856) at 1:10000 dilution. Lysates/proteins: 25 Mu g per lane. Blocking buffer: 3% nonfat dry milk in TBST. Detection: ECL Basic Kit. Exposure time: 180s.