

Anti-BMP7 antibody (70-251) (STJ117995)
STJ117995

GENERAL INFORMATION

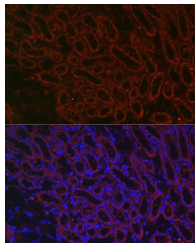
Product Type	Primary antibodies
Short Description	
Applications	WB/IHC-P/ELISA
Host/Source	Rabbit
Reactivity	Human/Mouse/Rat

PRODUCT PROPERTIES

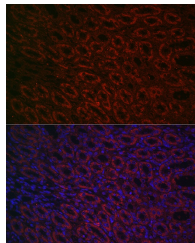
Clonality	Polyclonal
Clone ID	
Concentration	Lot specific
Conjugation	Unconjugated
Purification	Affinity purification
Dilution Range	WB:1:500-1:1000 IHC-P:1:50-1:200 ELISA:Recommended starting concentration is 1 μ g/mL. Please optimize the concentration based on your specific assay requirements.
Formulation	PBS with 0.09% Sodium Azide, 50% Glycerol, pH 7.3.
Isotype	IgG
Storage Instruction	Store at -20°C for up to 1 year from the date of receipt, and avoid repeat freeze-thaw cycles.

TARGET INFORMATION

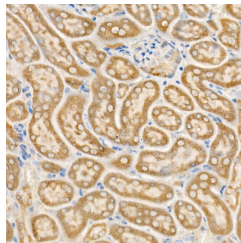
Gene ID	655
Gene Symbol	BMP7
Uniprot ID	BMP7_HUMAN
Immunogen	
Immunogen Region	70-251
Specificity	Recombinant fusion protein containing a sequence corresponding to amino acids 70-251 of BMP7 (NP_001710.1).
Immunogen Sequence	PHLQGGKHSAPMFMLDLNA MAVEEGGGPGGQGFSPYKA VFSTQGPPLASLQDSHFLTD ADMVMSFVNLVEHDKFFHP RYHHREFRFDLSKIPEGEAV TAAEFRIYKDYIRERFDNET FRISVYQVLQELHGRESDLF LLSRRTLWASEEGWLVDIT ATSNHWWNPRHNLGLQLSV ET



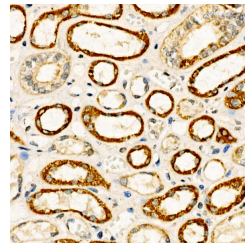
Immunofluorescence analysis of paraffin-embedded mouse kidney using BMP7 Rabbit polyclonal antibody (STJ117995) at dilution of 1:100 (40x lens). Secondary antibody: Cy3 Goat Anti-Rabbit IgG (H+L) at 1:500 dilution. Blue: DAPI for nuclear staining.



Immunofluorescence analysis of paraffin-embedded rat kidney using BMP7 Rabbit polyclonal antibody (STJ117995) at dilution of 1:100 (40x lens). Secondary antibody: Cy3 Goat Anti-Rabbit IgG (H+L) at 1:500 dilution. Blue: DAPI for nuclear staining.



Immunohistochemistry analysis of BMP7 in paraffin-embedded mouse kidney using BMP7 Rabbit polyclonal antibody (STJ117995) at dilution of 1:50 (40x lens). Perform high pressure antigen retrieval with 10 mM citrate buffer pH 6.0 before commencing with immunohistochemistry staining protocol.



Immunohistochemistry analysis of BMP7 in paraffin-embedded human kidney using BMP7 Rabbit polyclonal antibody (STJ117995) at dilution of 1:50 (40x lens). Perform high pressure antigen retrieval with 10 mM citrate buffer pH 6.0 before commencing with immunohistochemistry staining protocol.

This product is suitable for in-vitro studies under the RESEARCH USE ONLY [RUO] licence. This product must not be used as for diagnostic or other medical purposes.
St John's Laboratory Ltd, Knowledge Dock Business Centre, University Way, London, E16 2RD | Tel: 0208 223 3081