

Anti-INPP5D antibody (900-1000) (STJ117994)

STJ117994

GENERAL INFORMATION

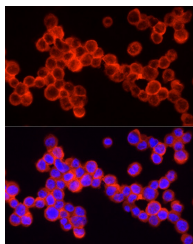
Product Type	Primary antibodies
Short Description	
Applications	WB/IHC-P/IF/ICC/ELISA
Host/Source	Rabbit
Reactivity	Human/Mouse/Rat

PRODUCT PROPERTIES

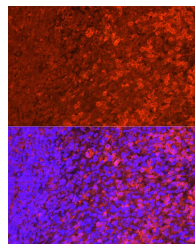
Clonality	Polyclonal
Clone ID	
Concentration	Lot specific
Conjugation	Unconjugated
Purification	Affinity purification
Dilution Range	WB:1:500-1:1000 IHC-P:1:50-1:200 IF/ICC:1:50-1:200 ELISA:Recommended starting concentration is 1 Mu g/mL. Please optimize the concentration based on your specific assay requirements.
Formulation	PBS with 0.05% Proclin300, 50% Glycerol, pH 7.3.
Isotype	IgG
Storage Instruction	Store at -20°C for up to 1 year from the date of receipt, and avoid repeat freeze-thaw cycles.

TARGET INFORMATION

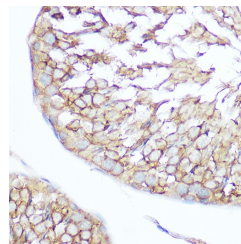
Gene ID	3635
Gene Symbol	INPP5D
Uniprot ID	SHIP1_HUMAN
Immunogen	
Immunogen Region	900-1000
Specificity	A synthetic peptide corresponding to a sequence within amino acids 900-1000 of human SHIP1 (NP_001017915.1).
Immunogen Sequence	PPCSGSSITEIINPNYMGVG PFGPPMPLHVKQLSPDQQP TAWSYDQPPKDSPLGPCRGE SPPTPPGQPPISPCKFLPST ANRGLPPRTQESRPSDLGKN A



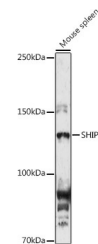
Immunofluorescence analysis of THP-1 cells using SHIP1 Rabbit polyclonal antibody (STJ117994) at dilution of 1:200 (40x lens). Blue: DAPI for nuclear staining.



Immunofluorescence analysis of mouse spleen cells using SHIP1 Rabbit polyclonal antibody (STJ117994) at dilution of 1:200 (40x lens). Blue: DAPI for nuclear staining.



Immunohistochemistry analysis of paraffin-embedded rat testis using SHIP1 Rabbit polyclonal antibody (STJ117994) at dilution of 1:100 (40x lens). Perform microwave antigen retrieval with 10 mM Tris/EDTA buffer pH 9.0 before commencing with immunohistochemistry staining protocol.



Western blot analysis of extracts of Mouse spleen, using SHIP1 antibody (STJ117994) at 1:1000 dilution. Secondary antibody: HRP Goat Anti-Rabbit IgG (H+L) (STJS000856) at 1:10000 dilution. Lysates/proteins: 25 Mu g per lane. Blocking buffer: 3% nonfat dry milk in TBST. Detection: ECL Enhanced Kit. Exposure time: 180s.

This product is suitable for in-vitro studies under the RESEARCH USE ONLY [RUO] licence. This product must not be used as for diagnostic or other medical purposes.
St John's Laboratory Ltd, Knowledge Dock Business Centre, University Way, London, E16 2RD | Tel: 0208 223 3081