

## Anti-Phospho-LAT-Y171 antibody (STJ117907)

STJ117907

### GENERAL INFORMATION

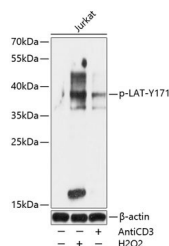
<b>Product Type</b>	Primary antibodies
<b>Short Description</b>	
<b>Applications</b>	WB/ELISA
<b>Host/Source</b>	Rabbit
<b>Reactivity</b>	Human

### PRODUCT PROPERTIES

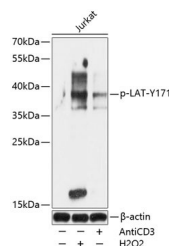
<b>Clonality</b>	Polyclonal
<b>Clone ID</b>	
<b>Concentration</b>	Lot specific
<b>Conjugation</b>	Unconjugated
<b>Purification</b>	Affinity purification
<b>Dilution Range</b>	WB:1:500-1:2000 ELISA:Recommended starting concentration is 1 Mu g/mL. Please optimize the concentration based on your specific assay requirements.
<b>Formulation</b>	PBS with 0.01% Thimerosal, 50% Glycerol, pH 7.3.
<b>Isotype</b>	IgG
<b>Storage Instruction</b>	Store at -20°C for up to 1 year from the date of receipt, and avoid repeat freeze-thaw cycles.

### TARGET INFORMATION

<b>Gene ID</b>	27040
<b>Gene Symbol</b>	LAT
<b>Uniprot ID</b>	LAT_HUMAN
<b>Immunogen</b>	DDYVN
<b>Immunogen Region</b>	
<b>Specificity</b>	A synthetic phosphorylated peptide around Y171 of human LAT (NP_001014987.1).
<b>Immunogen Sequence</b>	DDYVN



Western blot analysis of extracts of Jurkat cells, using Phospho-LAT-Y171 antibody (STJ117907) at 1:1000 dilution. Jurkat cells were treated by Hydrogen Peroxide (2mM) for 2 minutes after serum-starvation overnight or treated by CD-3 (10 ug/mL) for 2 minutes after serum-starvation overnight. Secondary antibody: HRP Goat Anti-rabbit IgG (H+L) at 1:10000 dilution. Lysates/proteins: 25ug per lane. Blocking buffer: 3% BSA. Detection: ECL Enhanced Kit. Exposure time: 5s.



Western blot analysis of lysates from Jurkat cells, using Phospho-LAT-Y171 Rabbit polyclonal antibody (STJ117907) at 1:1000 dilution. Jurkat cells were treated by Hydrogen Peroxide (2mM) for 2 minutes after serum-starvation overnight or treated by CD-3 (10 Mu g/mL) for 2 minutes after serum-starvation overnight. Secondary antibody: HRP Goat Anti-Rabbit IgG (H+L) (STJS000856) at 1:10000 dilution. Lysates/proteins: 25 Mu g per lane. Blocking buffer: 3% BSA. Detection: ECL Enhanced Kit. Exposure time: 5s.

This product is suitable for in-vitro studies under the RESEARCH USE ONLY [RUO] licence. This product must not be used as for diagnostic or other medical purposes.  
St John's Laboratory Ltd, Knowledge Dock Business Centre, University Way, London, E16 2RD | Tel: 0208 223 3081