

Anti-Phospho-PLCG2-Y1217 antibody (STJ117903)

STJ117903

GENERAL INFORMATION

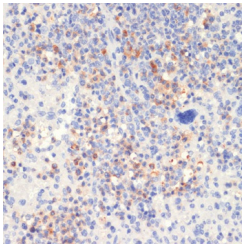
Product Type	Primary antibodies
Short Description	
Applications	WB/IHC-P/ELISA
Host/Source	Rabbit
Reactivity	Human/Mouse

PRODUCT PROPERTIES

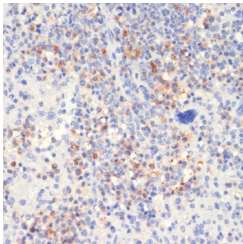
Clonality	Polyclonal
Clone ID	
Concentration	Lot specific
Conjugation	Unconjugated
Purification	Affinity purification
Dilution Range	WB:1:500-1:2000 IHC-P:1:50-1:200 ELISA:Recommended starting concentration is 1 μ g/mL. Please optimize the concentration based on your specific assay requirements.
Formulation	PBS with 0.05% Proclin300, 50% Glycerol, pH 7.3.
Isotype	IgG
Storage Instruction	Store at -20°C for up to 1 year from the date of receipt, and avoid repeat freeze-thaw cycles.

TARGET INFORMATION

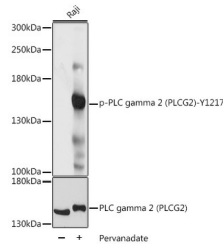
Gene ID	5336
Gene Symbol	PLCG2
Uniprot ID	PLCG2_HUMAN
Immunogen	FLYDT
Immunogen Region	
Specificity	A synthetic phosphorylated peptide around Y1217 of human PLC gamma 2 (PLCG2) (NP_002652.2).
Immunogen Sequence	FLYDT



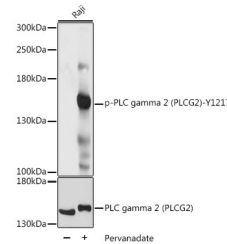
Western blot analysis of extracts of Raji cells, using Phospho-PLCG2-Y1217 antibody (STJ117903) at 1:1000 dilution or PLCG2 antibody (A2182). Raji cells were treated by Pervanadate (1 mM) at 37 °C for 30 minutes. Secondary antibody: HRP Goat Anti-rabbit IgG (H+L) at 1:10000 dilution. Lysates/proteins: 25 μ g per lane. Blocking buffer: 3% BSA. Detection: ECL Basic Kit. Exposure time: 1s.



Immunohistochemistry analysis of Phospho-PLC gamma 2 (PLCG2)-Y1217 in paraffin-embedded mouse spleen using Phospho-PLC gamma 2 (PLCG2)-Y1217 Rabbit polyclonal antibody (STJ117903) at dilution of 1:100 (40x lens). Perform microwave antigen retrieval with 10 mM Tris/EDTA buffer pH 9.0 before commencing with immunohistochemistry staining protocol.



Immunohistochemistry of paraffin-embedded mouse spleen using Phospho-PLCG2-Y1217 antibody (STJ117903) at dilution of 1:100 (40x lens).



Western blot analysis of lysates from Raji cells, using Phospho-PLC gamma 2 (PLCG2)-Y1217 Rabbit polyclonal antibody (STJ117903) at 1:1000 dilution or PLC gamma 2 (PLCG2) antibody (A2182). Raji cells were treated by Pervanadate (1 mM) at 37 °C for 30 minutes. Secondary antibody: HRP Goat Anti-Rabbit IgG (H+L) (STJ500856) at 1:10000 dilution. Lysates/proteins: 25 μ g per lane. Blocking buffer: 3% BSA. Detection: ECL Basic Kit. Exposure time: 1s.

This product is suitable for in-vitro studies under the RESEARCH USE ONLY [RUO] licence. This product must not be used as for diagnostic or other medical purposes.
St John's Laboratory Ltd, Knowledge Dock Business Centre, University Way, London, E16 2RD | Tel: 0208 223 3081