

Anti-Phospho-PPP1CA-T320 antibody (STJ117884)

STJ117884

GENERAL INFORMATION

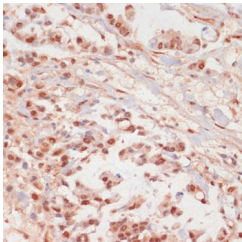
Product Type	Primary antibodies
Short Description	
Applications	WB/IHC-P/ELISA
Host/Source	Rabbit
Reactivity	Human/Mouse/Rat

PRODUCT PROPERTIES

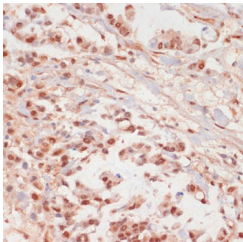
Clonality	Polyclonal
Clone ID	
Concentration	Lot specific
Conjugation	Unconjugated
Purification	Affinity purification
Dilution Range	WB:1:500-1:2000 IHC-P:1:50-1:100 ELISA:Recommended starting concentration is 1 µg/mL. Please optimize the concentration based on your specific assay requirements.
Formulation	PBS with 0.05% Proclin300, 50% Glycerol, pH 7.3.
Isotype	IgG
Storage Instruction	Store at -20°C for up to 1 year from the date of receipt, and avoid repeat freeze-thaw cycles.

TARGET INFORMATION

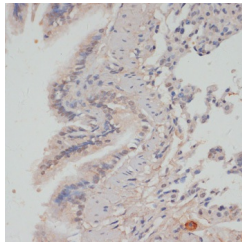
Gene ID	5499
Gene Symbol	PPP1CA
Uniprot ID	PP1A_HUMAN
Immunogen	PITPP
Immunogen Region	
Specificity	A synthetic phosphorylated peptide around T320 of human PPP1CA (NP_002699.1).
Immunogen Sequence	PITPP



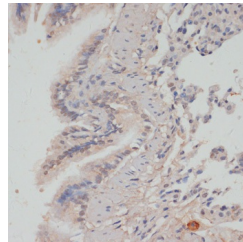
Western blot analysis of extracts of various cell lines, using Phospho-PPP1CA-T320 antibody (STJ117884) at 1:2000 dilution or PPP1CA antibody (A12468) at 1:2000 dilution. NIH/3T3 cells were treated by Calyculin A (100 nM) at 37 °C for 30 minutes after serum-starvation overnight. Secondary antibody: HRP Goat Anti-rabbit IgG (H+L) at 1:10000 dilution. Lysates/proteins: 25µg per lane. Blocking buffer: 3% BSA. Detection: ECL Basic Kit. Exposure time: 30s.



Immunohistochemistry analysis of Phospho-PPP1CA-T320 in paraffin-embedded human gastric cancer using Phospho-PPP1CA-T320 Rabbit polyclonal antibody (STJ117884) at dilution of 1:100 (40x lens). Perform microwave antigen retrieval with 10 mM Tris/EDTA buffer pH 9.0 before commencing with immunohistochemistry staining protocol.



Immunohistochemistry of paraffin-embedded rat lung using Phospho-PPP1CA-T320 antibody (STJ117884) at dilution of 1:100 (40x lens).



Immunohistochemistry analysis of Phospho-PPP1CA-T320 in paraffin-embedded rat lung using Phospho-PPP1CA-T320 Rabbit polyclonal antibody (STJ117884) at dilution of 1:100 (40x lens). Perform microwave antigen retrieval with 10 mM Tris/EDTA buffer pH 9.0 before commencing with immunohistochemistry staining protocol.

This product is suitable for in-vitro studies under the RESEARCH USE ONLY [RUO] licence. This product must not be used as for diagnostic or other medical purposes.
St John's Laboratory Ltd, Knowledge Dock Business Centre, University Way, London, E16 2RD | Tel: 0208 223 3081