

Anti-ADM antibody (50-150) (STJ117861)
STJ117861

GENERAL INFORMATION

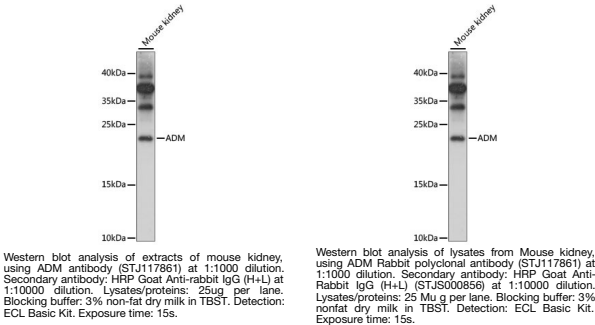
Product Type	Primary antibodies
Short Description	
Applications	WB/ELISA
Host/Source	Rabbit
Reactivity	Mouse

PRODUCT PROPERTIES

Clonality	Polyclonal
Clone ID	
Concentration	Lot specific
Conjugation	Unconjugated
Purification	Affinity purification
Dilution Range	WB:1:500-1:2000 ELISA:Recommended starting concentration is 1 Mu g/mL. Please optimize the concentration based on your specific assay requirements.
Formulation	PBS with 0.01% Thimerosal, 50% Glycerol, pH 7.3.
Isotype	IgG
Storage	Store at -20°C for up to 1 year from the date of receipt, and avoid repeat freeze-thaw cycles.
Instruction	

TARGET INFORMATION

Gene ID	133
Gene Symbol	ADM
Uniprot ID	ADML_HUMAN
Immunogen	
Immunogen Region	50-150
Specificity	A synthetic peptide corresponding to a sequence within amino acids 50-150 of human ADM (NP_001115.1).
Immunogen Sequence	SSYPTGLADVKAGPAQTLIR PQDMKGASRSPEDSSPDAAR IRVKRYRQSMNNFQGLRSFG CRFGTCTVQKLAHQIQFTD KDKDNVAPRSKISPQGYGRR R



This product is suitable for in-vitro studies under the RESEARCH USE ONLY [RUO] licence. This product must not be used as for diagnostic or other medical purposes.
St John's Laboratory Ltd, Knowledge Dock Business Centre, University Way, London, E16 2RD | Tel: 0208 223 3081