

**Anti-NLRP2 antibody (665-820) (STJ117856)**  
STJ117856

**GENERAL INFORMATION**

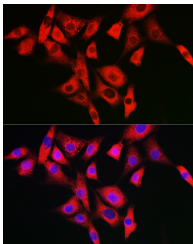
<b>Product Type</b>	Primary antibodies
<b>Short Description</b>	
<b>Applications</b>	WB/IF/ICC/ELISA
<b>Host/Source</b>	Rabbit
<b>Reactivity</b>	Human/Mouse

**PRODUCT PROPERTIES**

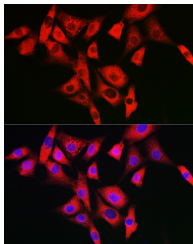
<b>Clonality</b>	Polyclonal
<b>Clone ID</b>	
<b>Concentration</b>	Lot specific
<b>Conjugation</b>	Unconjugated
<b>Purification</b>	Affinity purification
<b>Dilution Range</b>	WB:1:500-1:1000 IF/CC:1:50-1:200 ELISA:Recommended starting concentration is 1 Mu g/mL. Please optimize the concentration based on your specific assay requirements.
<b>Formulation</b>	PBS with 0.09% Sodium Azide, 50% Glycerol, pH 7.3.
<b>Isotype</b>	IgG
<b>Storage Instruction</b>	Store at -20°C for up to 1 year from the date of receipt, and avoid repeat freeze-thaw cycles.

**TARGET INFORMATION**

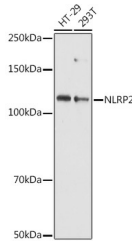
<b>Gene ID</b>	55655
<b>Gene Symbol</b>	NLRP2
<b>Uniprot ID</b>	NALP2_HUMAN
<b>Immunogen Region</b>	665-820
<b>Specificity</b>	Recombinant fusion protein containing a sequence corresponding to amino acids 665-820 of human NLRP2 (NP_060322.1).
<b>Immunogen Sequence</b>	NVTASESDAEVERSQDDQHM LPFWTDLCSIFGSNKDLMGL AINDSFLSASLVRILCEQIA SDTCHLQRVVFKNISPADAH RNLCLALRGHKVTYTLTQG NDQDDMFALCEVLRHPECN LRYLGLVSCSATTQQWADLS LALEVNQSLTCVNLSD



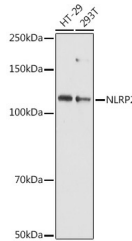
Western blot analysis of extracts of various cell lines, using NLRP2 antibody (STJ117856) at 1:1000 dilution. Secondary antibody: HRP Goat Anti-rabbit IgG (H+L) at 1:10000 dilution. Lysates/proteins: 25ug per lane. Blocking buffer: 3% non-fat dry milk in TBST. Detection: ECL Basic Kit. Exposure time: 90s.



Immunofluorescence analysis of NIH/3T3 cells using NLRP2 Rabbit polyclonal antibody (STJ117856) at dilution of 1:100 (40x lens). Blue: DAPI for nuclear staining.



Immunofluorescence analysis of NIH/3T3 cells using NLRP2 rabbit polyclonal antibody (STJ117856) at dilution of 1:100 (40x lens). Blue: DAPI for nuclear staining.



Western blot analysis of extracts of various cell lines, using NLRP2 antibody (STJ117856) at 1:1000 dilution. Secondary antibody: HRP Goat Anti-Rabbit IgG (H+L) (STJS000856) at 1:10000 dilution. Lysates/proteins: 25 Mu g per lane. Blocking buffer: 3% nonfat dry milk in TBST. Detection: ECL Basic Kit. Exposure time: 90s.

This product is suitable for in-vitro studies under the RESEARCH USE ONLY [RUO] licence. This product must not be used as for diagnostic or other medical purposes.  
St John's Laboratory Ltd, Knowledge Dock Business Centre, University Way, London, E16 2RD | Tel: 0208 223 3081