

## Anti-CLDN14 antibody (25-85) (STJ117839)

STJ117839

### GENERAL INFORMATION

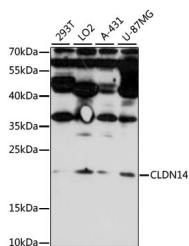
<b>Product Type</b>	Primary antibodies
<b>Short Description</b>	
<b>Applications</b>	WB/ELISA
<b>Host/Source</b>	Rabbit
<b>Reactivity</b>	Human

### PRODUCT PROPERTIES

<b>Clonality</b>	Polyclonal
<b>Clone ID</b>	
<b>Concentration</b>	Lot specific
<b>Conjugation</b>	Unconjugated
<b>Purification</b>	Affinity purification
<b>Dilution Range</b>	WB:1:500-1:2000 ELISA:Recommended starting concentration is 1 µg/mL. Please optimize the concentration based on your specific assay requirements.
<b>Formulation</b>	PBS with 0.01% Thimerosal, 50% Glycerol, pH 7.3.
<b>Isotype</b>	IgG
<b>Storage Instruction</b>	Store at -20°C for up to 1 year from the date of receipt, and avoid repeat freeze-thaw cycles.

### TARGET INFORMATION

<b>Gene ID</b>	23562
<b>Gene Symbol</b>	CLDN14
<b>Uniprot ID</b>	CLD14_HUMAN
<b>Immunogen</b>	
<b>Immunogen Region</b>	25-85
<b>Specificity</b>	Recombinant fusion protein containing a sequence corresponding to amino acids 25-85 of human CLDN14 (NP_652763.1).
<b>Immunogen Sequence</b>	TILPHWRRTAHVGTNLTAV SYLKGLWMECVWHSTGIYQC QIYRSLALPQDLQAARALM V



This product is suitable for in-vitro studies under the RESEARCH USE ONLY [RUO] licence. This product must not be used as for diagnostic or other medical purposes.  
St John's Laboratory Ltd, Knowledge Dock Business Centre, University Way, London, E16 2RD | Tel: 0208 223 3081