

Anti-PFKL antibody (700-780) (STJ117838)

STJ117838

GENERAL INFORMATION

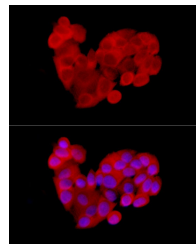
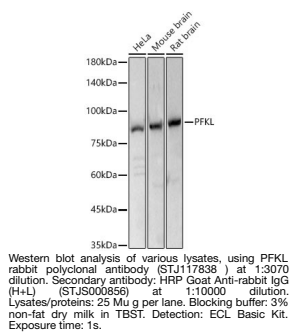
Product Type	Primary antibodies
Short Description	
Applications	WB/IF/ICC/ELISA
Host/Source	Rabbit
Reactivity	Human/Mouse/Rat

PRODUCT PROPERTIES

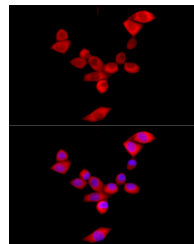
Clonality	Polyclonal
Clone ID	
Concentration	Lot specific
Conjugation	Unconjugated
Purification	Affinity purification
Dilution Range	WB:1:500-1:1000 IF/ICC:1:50-1:200 ELISA:Recommended starting concentration is 1 µg/mL. Please optimize the concentration based on your specific assay requirements.
Formulation	PBS with 0.05% Proclin300, 50% Glycerol, pH 7.3.
Isotype	IgG
Storage Instruction	Store at -20°C for up to 1 year from the date of receipt, and avoid repeat freeze-thaw cycles.

TARGET INFORMATION

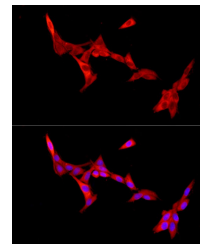
Gene ID	5211
Gene Symbol	PFKL
Uniprot ID	PFKAL_HUMAN
Immunogen	
Immunogen Region	700-780
Specificity	Recombinant fusion protein containing a sequence corresponding to amino acids 700-780 of human PFKL (NP_002617.3).
Immunogen Sequence	FANAPDSACVIGLKKKAVAF SPVTELEKDTDFEHRMPREQ WWLSLRMLKMLAQYRISMA AYVSGELEHVTRRTLSDMDKG F



Immunofluorescence analysis of MCF7 cells using PFKL rabbit polyclonal antibody (STJ117838) at dilution of 1:300 (40x lens). Blue: DAPI for nuclear staining.



Immunofluorescence analysis of NIH/3T3 cells using PFKL rabbit polyclonal antibody (STJ117838) at dilution of 1:300 (40x lens). Blue: DAPI for nuclear staining.



Immunofluorescence analysis of PC-12 cells using PFKL rabbit polyclonal antibody (STJ117838) at dilution of 1:300 (40x lens). Blue: DAPI for nuclear staining.

This product is suitable for in-vitro studies under the RESEARCH USE ONLY [RUO] licence. This product must not be used as for diagnostic or other medical purposes.
St John's Laboratory Ltd, Knowledge Dock Business Centre, University Way, London, E16 2RD | Tel: 0208 223 3081