

Anti-CD2 antibody (235-351) (STJ117816)

STJ117816

GENERAL INFORMATION

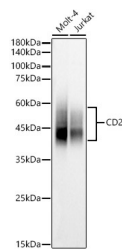
Product Type	Primary antibodies
Short Description	
Applications	WB/IHC-P/ELISA
Host/Source	Rabbit
Reactivity	Human

PRODUCT PROPERTIES

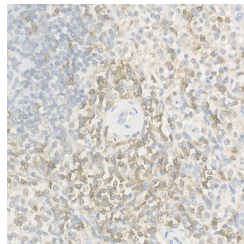
Clonality	Polyclonal
Clone ID	
Concentration	Lot specific
Conjugation	Unconjugated
Purification	Affinity purification
Dilution Range	WB:1:500-1:1000 IHC-P:1:50-1:200 ELISA:Recommended starting concentration is 1 µg/mL. Please optimize the concentration based on your specific assay requirements.
Formulation	PBS with 0.05% Proclin300, 50% Glycerol, pH 7.3.
Isotype	IgG
Storage Instruction	Store at -20°C for up to 1 year from the date of receipt, and avoid repeat freeze-thaw cycles.

TARGET INFORMATION

Gene ID	914
Gene Symbol	CD2
Uniprot ID	CD2_HUMAN
Immunogen	
Immunogen Region	235-351
Specificity	Recombinant fusion protein containing a sequence corresponding to amino acids 235-351 of human CD2 (NP_001758.2).
Immunogen Sequence	TKRKKQRSRRNDEELETRAH RVATEERGRKPHQIPASTPQ NPATSQHPPPPGHRSQAPS HRPPPPGHRVQHQPQKRPPA PSGTQVHQKGPPLPRPVQ PKPPHGAAENSLSPSSN



Western blot analysis of various lysates, using CD2 antibody (STJ117816) at 1:1000 dilution. Secondary antibody: HRP Goat Anti-rabbit IgG (H+L) (STJ500856) at 1:10000 dilution. Lysates/proteins: 25 µg per lane. Blocking buffer: 3% non-fat dry milk in TBST. Detection: ECL Basic Kit. Exposure time: 20s.



Immunohistochemistry analysis of paraffin-embedded human tonsil using CD2 rabbit polyclonal antibody (STJ117816) at dilution of 1:100 (40x lens). Perform high pressure antigen retrieval with 10 mM citrate buffer pH 6.0 before commencing with immunohistochemistry staining protocol.

This product is suitable for in-vitro studies under the RESEARCH USE ONLY [RUO] licence. This product must not be used as for diagnostic or other medical purposes.
St John's Laboratory Ltd, Knowledge Dock Business Centre, University Way, London, E16 2RD | Tel: 0208 223 3081