

Anti-IFITM1 antibody (50-125) (STJ117809)

STJ117809

GENERAL INFORMATION

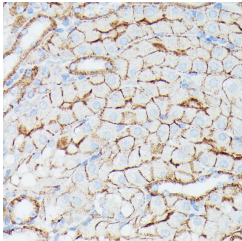
Product Type	Primary antibodies
Short Description	
Applications	WB/IHC-P/ELISA
Host/Source	Rabbit
Reactivity	Human/Mouse

PRODUCT PROPERTIES

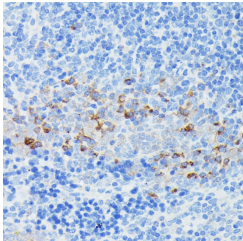
Clonality	Polyclonal
Clone ID	
Concentration	Lot specific
Conjugation	Unconjugated
Purification	Affinity purification
Dilution Range	WB:1:200-1:2000 ELISA:Recommended starting concentration is 1 μ g/mL. Please optimize the concentration based on your specific assay requirements.
Formulation	PBS with 0.01% Thimerosal, 50% Glycerol, pH 7.3.
Isotype	IgG
Storage Instruction	Store at -20°C for up to 1 year from the date of receipt, and avoid repeat freeze-thaw cycles.

TARGET INFORMATION

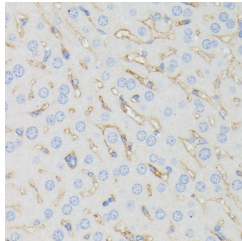
Gene ID	8519
Gene Symbol	IFITM1
Uniprot ID	IFM1_HUMAN
Immunogen	
Immunogen Region	50-125
Specificity	A synthetic peptide corresponding to a sequence within amino acids 50-125 of human CD225/IFITM1 (NP_003632.3).
Immunogen Sequence	CCLGFIAFAYSVKSRDRKMV GDVTGAQAYASTAKCLNIWA LILGILMTIGIFILLVFGSV TVYHIMLQIIQEKRGY



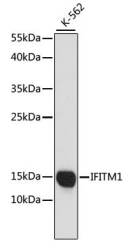
Immunohistochemistry analysis of CD225/IFITM1 in paraffin-embedded mouse kidney using CD225/IFITM1 Rabbit polyclonal antibody (STJ117809) at dilution of 1:100 (40x lens). Perform microwave antigen retrieval with 10 mM PBS buffer pH 7.2 before commencing with immunohistochemistry staining protocol.



Immunohistochemistry analysis of CD225/IFITM1 in paraffin-embedded mouse spleen using CD225/IFITM1 Rabbit polyclonal antibody (STJ117809) at dilution of 1:100 (40x lens). Perform microwave antigen retrieval with 10 mM PBS buffer pH 7.2 before commencing with immunohistochemistry staining protocol.



Immunohistochemistry analysis of CD225/IFITM1 in paraffin-embedded mouse liver using CD225/IFITM1 Rabbit polyclonal antibody (STJ117809) at dilution of 1:100 (40x lens). Perform microwave antigen retrieval with 10 mM PBS buffer pH 7.2 before commencing with immunohistochemistry staining protocol.



Western blot analysis of lysates from K-562 cells, using CD225/IFITM1 Rabbit polyclonal antibody (STJ117809) at 1:1000 dilution. Secondary antibody: HRP Goat Anti-Rabbit IgG (H+L) (STJS000856) at 1:10000 dilution. Lysates/proteins: 25 μ g per lane. Blocking buffer: 3% nonfat dry milk in TBST. Detection: ECL Basic Kit. Exposure time: 90s.

This product is suitable for in-vitro studies under the RESEARCH USE ONLY [RUO] licence. This product must not be used as for diagnostic or other medical purposes.
St John's Laboratory Ltd, Knowledge Dock Business Centre, University Way, London, E16 2RD | Tel: 0208 223 3081