

Anti-PDK2 antibody (128-407) (STJ117807)

STJ117807

GENERAL INFORMATION

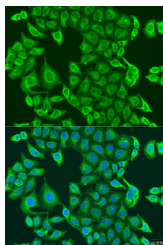
Product Type	Primary antibodies
Short Description	
Applications	WB/IF/ICC/ELISA
Host/Source	Rabbit
Reactivity	Human/Mouse/Rat

PRODUCT PROPERTIES

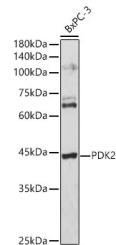
Clonality	Polyclonal
Clone ID	
Concentration	Lot specific
Conjugation	Unconjugated
Purification	Affinity purification
Dilution	WB:1:1000-1:5000
Range	IF/CC:1:50-1:200
	ELISA:Recommended starting concentration is 1 Mu g/mL. Please optimize the concentration based on your specific assay requirements.
Formulation	PBS with 0.02% Sodium Azide, 50% Glycerol, pH 7.3.
Isotype	IgG
Storage Instruction	Store at -20°C for up to 1 year from the date of receipt, and avoid repeat freeze-thaw cycles.

TARGET INFORMATION

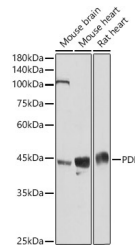
Gene ID	5164
Gene Symbol	PDK2
Uniprot ID	PDK2_HUMAN
Immunogen	
Immunogen Region	128-407
Specificity	Recombinant fusion protein containing a sequence corresponding to amino acids 128-407 of human PDK2 (NP_002602.2).
Immunogen Sequence	PTMAQGVLEYKDTYGDDPVS NQNIQYFLDRFYLSRISIRM LINQHTLIFDGSTNPAHPKH IGSIDPNCNVSEVVKDAYDM AKLLCDKYMASPDLEIQEI NAANSKQPIHMVYVPSHLYH MLFELFKNAMRATVESHESS LILPPIKVMVALGEEDLSIK MSDRGGGVPLRKIERLFSYM YSTAPTPQPGTGGTLAGFG YGLPISRLYAKYFQGDQLQLF SMEGFGTDAVIYLKALSTD



Immunofluorescence analysis of U2OS cells using PDK2 antibody (STJ117807) at dilution of 1:100. Blue: DAPI for nuclear staining.



Western blot analysis of extracts of BxPC-3 cells, using PDK2 antibody (STJ117807) at 1:3000 dilution. Secondary antibody: HRP Goat Anti-Rabbit IgG (H+L) (STJ3000856) at 1:10000 dilution. Lysates/proteins: 25 Mu g per lane. Blocking buffer: 3% nonfat dry milk in TBST. Detection: ECL Basic Kit. Exposure time: 180s.



Western blot analysis of extracts of various cell lines, using PDK2 antibody (STJ117807) at 1:3000 dilution. Secondary antibody: HRP Goat Anti-Rabbit IgG (H+L) (STJ3000856) at 1:10000 dilution. Lysates/proteins: 25 Mu g per lane. Blocking buffer: 3% nonfat dry milk in TBST. Detection: ECL Basic Kit. Exposure time: 10s.

This product is suitable for in-vitro studies under the RESEARCH USE ONLY [RUO] licence. This product must not be used as for diagnostic or other medical purposes.

St John's Laboratory Ltd, Knowledge Dock Business Centre, University Way, London, E16 2RD | Tel: 0208 223 3081