

**Anti-INSIG2 antibody (50-150) (STJ117794)**  
STJ117794

**GENERAL INFORMATION**

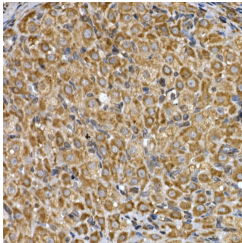
<b>Product Type</b>	Primary antibodies
<b>Short Description</b>	
<b>Applications</b>	WB/IHC-P/ELISA
<b>Host/Source</b>	Rabbit
<b>Reactivity</b>	Human/Mouse/Rat

**PRODUCT PROPERTIES**

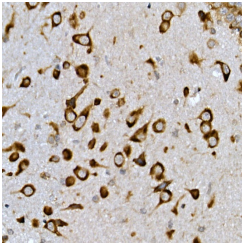
<b>Clonality</b>	Polyclonal
<b>Clone ID</b>	
<b>Concentration</b>	Lot specific
<b>Conjugation</b>	Unconjugated
<b>Purification</b>	Affinity purification
<b>Dilution Range</b>	WB:1:500-1:1000 IHC-P:1:50-1:200 ELISA:Recommended starting concentration is 1 Mu g/mL. Please optimize the concentration based on your specific assay requirements.
<b>Formulation</b>	PBS with 0.05% Proclin300, 50% Glycerol, pH 7.3.
<b>Isotype</b>	IgG
<b>Storage Instruction</b>	Store at-20°C for up to 1 year from the date of receipt, and avoid repeat freeze-thaw cycles.

**TARGET INFORMATION**

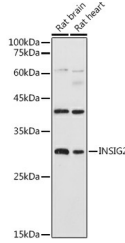
<b>Gene ID</b>	51141
<b>Gene Symbol</b>	INSIG2
<b>Uniprot ID</b>	INSI2_HUMAN
<b>Immunogen</b>	
<b>Immunogen Region</b>	50-150
<b>Specificity</b>	A synthetic peptide corresponding to a sequence within amino acids 50-150 of human INSIG2 (NP_057217.2).
<b>Immunogen Sequence</b>	QIQRNVTLFPPDVIASIFSS AWWVPPCCGTASAVIGLLYP CIDRHLGEPHKFKREWSSVM RCVAVFVGINHASAKVDFDN NIQLSLTLAALSIGLWWTFD R



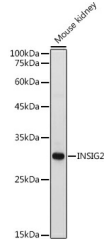
Immunohistochemistry analysis of INSIG2 in paraffin-embedded rat ovary using INSIG2 Rabbit polyclonal antibody (STJ117794) at dilution of 1:200 (40x lens). Perform high pressure antigen retrieval with 10 mM citrate buffer pH 6.0 before commencing with immunohistochemistry staining protocol.



Immunohistochemistry analysis of INSIG2 in paraffin-embedded mouse brain using INSIG2 Rabbit polyclonal antibody (STJ117794) at dilution of 1:200 (40x lens). Perform high pressure antigen retrieval with 10 mM citrate buffer pH 6.0 before commencing with immunohistochemistry staining protocol.



Western blot analysis of various lysates using INSIG2 Rabbit polyclonal antibody (STJ117794) at 1:1000 dilution. Secondary antibody: HRP Goat Anti-Rabbit IgG (H+L) (STJ5000856) at 1:10000 dilution. Lysates/proteins: 25 Mu g per lane. Blocking buffer: 3% nonfat dry milk in TBST. Detection: ECL Basic Kit. Exposure time: 10s.



Western blot analysis of lysates from Mouse kidney using INSIG2 Rabbit polyclonal antibody (STJ117794) at 1:1000 dilution. Secondary antibody: HRP Goat Anti-Rabbit IgG (H+L) (STJ5000856) at 1:10000 dilution. Lysates/proteins: 25 Mu g per lane. Blocking buffer: 3% nonfat dry milk in TBST. Detection: ECL Basic Kit. Exposure time: 1s.

This product is suitable for in-vitro studies under the RESEARCH USE ONLY [RUO] licence. This product must not be used as for diagnostic or other medical purposes.  
St John's Laboratory Ltd, Knowledge Dock Business Centre, University Way, London, E16 2RD | Tel: 0208 223 3081