

**Anti-MAP1LC3A/MAP1LC3B antibody (1-125) (STJ117779)**  
STJ117779

**GENERAL INFORMATION**

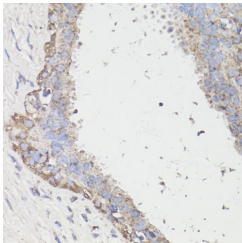
<b>Product Type</b>	Primary antibodies
<b>Short Description</b>	
<b>Applications</b>	WB/IHC-P/ELISA
<b>Host/Source</b>	Rabbit
<b>Reactivity</b>	Human/Mouse

**PRODUCT PROPERTIES**

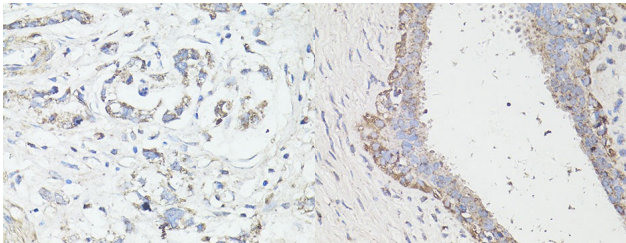
<b>Clonality</b>	Polyclonal
<b>Clone ID</b>	
<b>Concentration</b>	Lot specific
<b>Conjugation</b>	Unconjugated
<b>Purification</b>	Affinity purification
<b>Dilution Range</b>	WB:1:500-1:1000 IHC-P:1:50-1:200 ELISA:Recommended starting concentration is 1 Mu g/mL. Please optimize the concentration based on your specific assay requirements.
<b>Formulation</b>	PBS with 0.09% Sodium Azide, 50% Glycerol, pH 7.3.
<b>Isotype</b>	IgG
<b>Storage Instruction</b>	Store at -20°C for up to 1 year from the date of receipt, and avoid repeat freeze-thaw cycles.

**TARGET INFORMATION**

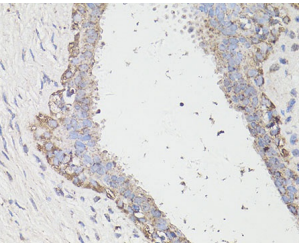
<b>Gene ID</b>	81631 84557
<b>Gene Symbol</b>	MAP1LC3B MAP1LC3A
<b>Uniprot ID</b>	MLP3B_HUMAN MLP3A_HUMAN
<b>Immunogen</b>	
<b>Immunogen Region</b>	1-125
<b>Specificity</b>	Recombinant fusion protein containing a sequence corresponding to amino acids 1-125 of human LC3A/LC3B (NP_073729.1).
<b>Immunogen Sequence</b>	MPSEKTFKQRRTFEQRVEDV RLIREQHPTKIPVIERYKG EKQLPVLDTKFLVPDHVNM SELIKIIRRLQLNANQAFF LLVNGHSMVSVSTPISEVYE SEKDEGFLYLMVYASQETFG MKLSV



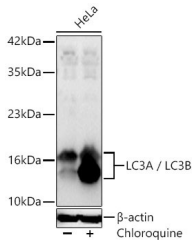
Immunohistochemistry analysis of LC3A/ LC3B in paraffin-embedded human mammary cancer using LC3A/ LC3B Rabbit polyclonal antibody (STJ117779) at dilution of 1:100 (40x lens). Perform microwave antigen retrieval with 10 mM PBS buffer pH 7. 2 before commencing with immunohistochemistry staining protocol.



Immunohistochemistry analysis of LC3A/ LC3B in paraffin-embedded human gastric cancer using LC3A/ LC3B Rabbit polyclonal antibody (STJ117779) at dilution of 1:100 (40x lens). Perform microwave antigen retrieval with 10 mM PBS buffer pH 7. 2 before commencing with immunohistochemistry staining protocol.



Immunohistochemistry analysis of LC3A/ LC3B in paraffin-embedded human breast cancer using LC3A/ LC3B Rabbit polyclonal antibody (STJ117779) at dilution of 1:100 (40x lens). Perform microwave antigen retrieval with 10 mM PBS buffer pH 7. 2 before commencing with immunohistochemistry staining protocol.



Western blot analysis of lysates from HeLa cells using LC3A/ LC3B Rabbit polyclonal antibody (STJ117779) at 1:1000 dilution. Incubated at room temperature for 1.5 hours. HeLa cells were treated by Chloroquine (50 Mu M) at 37 °C for 20 hours. Secondary antibody: HRP-conjugated Goat anti-Rabbit IgG (H+L) (STJSD00856) at 1:10000 dilution. Lysates/proteins: 30 Mu g per lane. Blocking buffer: 3 % nonfat dry milk in TBST. Detection: ECL Basic Kit. Exposure time: 60s.

This product is suitable for in-vitro studies under the RESEARCH USE ONLY [RUO] licence. This product must not be used as for diagnostic or other medical purposes.  
St John's Laboratory Ltd, Knowledge Dock Business Centre, University Way, London, E16 2RD | Tel: 0208 223 3081