

Anti-TOP1MT antibody (470-550) (STJ117754)

STJ117754

GENERAL INFORMATION

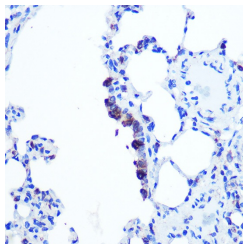
Product Type	Primary antibodies
Short Description	
Applications	WB/IHC-P/ELISA
Host/Source	Rabbit
Reactivity	Human/Rat

PRODUCT PROPERTIES

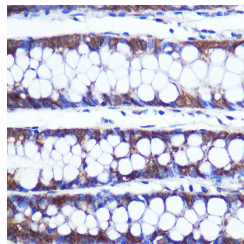
Clonality	Polyclonal
Clone ID	
Concentration	Lot specific
Conjugation	Unconjugated
Purification	Affinity purification
Dilution Range	WB:1:200-1:2000 IHC-P:1:50-1:200 ELISA:Recommended starting concentration is 1 µg/mL. Please optimize the concentration based on your specific assay requirements.
Formulation	PBS with 0.01% Thimerosal, 50% Glycerol, pH 7.3.
Isotype	IgG
Storage Instruction	Store at -20°C for up to 1 year from the date of receipt, and avoid repeat freeze-thaw cycles.

TARGET INFORMATION

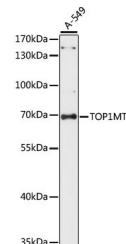
Gene ID	116447
Gene Symbol	TOP1MT
Uniprot ID	TOP1M_HUMAN
Immunogen	
Immunogen Region	470-550
Specificity	Recombinant fusion protein containing a sequence corresponding to amino acids 470-550 of human TOP1MT (NP_443195.1).
Immunogen Sequence	RATPSTFEKSMQNLQTKIQA KKEQVAEARAELRRARAHEHK AQGDGKSRSVLEKKRRLEK LQEQLAQLSVQATDKEENKQ V



Immunohistochemistry analysis of TOP1MT in paraffin-embedded Rat lung using TOP1MT Rabbit polyclonal antibody (STJ117754) at dilution of 1:100 (40x lens). Perform microwave antigen retrieval with 10 mM PBS buffer pH 7.2 before commencing with immunohistochemistry staining protocol.



Immunohistochemistry analysis of TOP1MT in paraffin-embedded Human colon using TOP1MT Rabbit polyclonal antibody (STJ117754) at dilution of 1:100 (40x lens). Perform microwave antigen retrieval with 10 mM PBS buffer pH 7.2 before commencing with immunohistochemistry staining protocol.



Western blot analysis of lysates from A-549 cells, using TOP1MT Rabbit polyclonal antibody (STJ117754) at 1:1000 dilution. Secondary antibody: HRP Goat Anti-Rabbit IgG (H+L) (STJS000856) at 1:10000 dilution. Lysates/proteins: 25 µg per lane. Blocking buffer: 3% nonfat dry milk in TBST. Detection: ECL Basic Kit. Exposure time: 60S.