

Anti-SPPL2A antibody (421-520) (STJ117734)

STJ117734

GENERAL INFORMATION

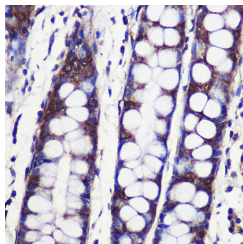
Product Type	Primary antibodies
Short Description	
Applications	WB/IHC-P/ELISA
Host/Source	Rabbit
Reactivity	Human/Mouse/Rat

PRODUCT PROPERTIES

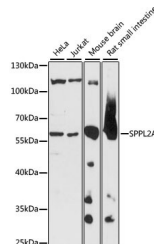
Clonality	Polyclonal
Clone ID	
Concentration	Lot specific
Conjugation	Unconjugated
Purification	Affinity purification
Dilution Range	WB:1:200-1:2000 IHC-P:1:50-1:200 ELISA:Recommended starting concentration is 1 Mu g/mL. Please optimize the concentration based on your specific assay requirements.
Formulation	PBS with 0.01% Thimerosal, 50% Glycerol, pH 7.3.
Isotype	IgG
Storage Instruction	Store at -20°C for up to 1 year from the date of receipt, and avoid repeat freeze-thaw cycles.

TARGET INFORMATION

Gene ID	84888
Gene Symbol	SPPL2A
Uniprot ID	SPP2A_HUMAN
Immunogen	
Immunogen Region	421-520
Specificity	Recombinant fusion protein containing a sequence corresponding to amino acids 421-520 of human SPPL2A (NP_116191.2).
Immunogen Sequence	AYCRRFDVQTGSSYIYYVSS TVAYAIGMILTFVVLVLMKK QPALLYLVPCTLTASVVA WRRKEMKKFWKGNSYQMMDH LDCATNEENPVISGEIVQQ



Immunohistochemistry analysis of SPPL2A in paraffin-embedded Human colon using SPPL2A Rabbit polyclonal antibody (STJ117734) at dilution of 1:100 (40x lens). Perform microwave antigen retrieval with 10 mM PBS buffer pH 7.2 before commencing with immunohistochemistry staining protocol.



Western blot analysis of various lysates using SPPL2A Rabbit polyclonal antibody (STJ117734) at 1:1000 dilution. Secondary antibody: HRP Goat Anti-Rabbit IgG (H+L) (STJS000856) at 1:10000 dilution. Lysates/proteins: 25 Mu g per lane. Blocking buffer: 3% nonfat dry milk in TBST. Detection: ECL Basic Kit. Exposure time: 5s.