

Anti-LLPH antibody (1-129) (STJ117729)
STJ117729

GENERAL INFORMATION

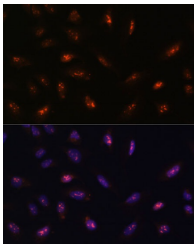
Product Type	Primary antibodies
Short Description	
Applications	WB/IF/CC/ELISA
Host/Source	Rabbit
Reactivity	Human/Rat

PRODUCT PROPERTIES

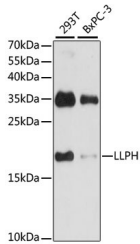
Clonality	Polyclonal
Clone ID	
Concentration	Lot specific
Conjugation	Unconjugated
Purification	Affinity purification
Dilution Range	WB:1:200-1:2000 IF/CC:1:50-1:200 ELISA:Recommended starting concentration is 1 Mu g/mL. Please optimize the concentration based on your specific assay requirements.
Formulation	PBS with 0.01% Thimerosal, 50% Glycerol, pH 7.3.
Isotype	IgG
Storage Instruction	Store at -20°C for up to 1 year from the date of receipt, and avoid repeat freeze-thaw cycles.

TARGET INFORMATION

Gene ID	84298
Gene Symbol	LLPH
Uniprot ID	LLPH_HUMAN
Immunogen	
Immunogen Region	1-129
Specificity	Recombinant fusion protein containing a sequence corresponding to amino acids 1-129 of human LLPH (NP_115714.1).
Immunogen Sequence	MAKSLRSKWKRKMRAEKRRK NAPKEASRLKSILKLDGDVL MKDVQEIATVVVPKPKHCQE KMQCEVKDEKDDMKMETDIK RNKKTLLDQHGQYPIWMNQ RQRRLKAKREKRKGSKAKA VKVAKGLAW



Immunofluorescence analysis of U-2 OS cells using LLPH Rabbit polyclonal antibody (STJ117729) at dilution of 1:100. Secondary antibody: Cy3 Goat Anti-Rabbit IgG (H+L) at 1:500 dilution. Blue: DAPI for nuclear staining.



Western blot analysis of various lysates using LLPH Rabbit polyclonal antibody (STJ117729) at 1:1000 dilution. Secondary antibody: HRP Goat Anti-Rabbit IgG (H+L) (STJS000856) at 1:10000 dilution. Lysates/proteins: 25 Mu g per lane. Blocking buffer: 3% nonfat dry milk in TBST. Detection: ECL Basic Kit. Exposure time: 30s.

This product is suitable for in-vitro studies under the RESEARCH USE ONLY [RUO] licence. This product must not be used as for diagnostic or other medical purposes.
St John's Laboratory Ltd, Knowledge Dock Business Centre, University Way, London, E16 2RD | Tel: 0208 223 3081