

Anti-SLC12A5 antibody (945-1025) (STJ117681)

STJ117681

GENERAL INFORMATION

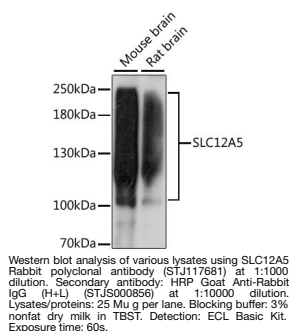
Product Type	Primary antibodies
Short Description	
Applications	WB/ELISA
Host/Source	Rabbit
Reactivity	Human/Mouse/Rat

PRODUCT PROPERTIES

Clonality	Polyclonal
Clone ID	
Concentration	Lot specific
Conjugation	Unconjugated
Purification	Affinity purification
Dilution Range	WB:1:200-1:2000 ELISA:Recommended starting concentration is 1 µg/mL. Please optimize the concentration based on your specific assay requirements.
Formulation	PBS with 0.01% Thimerosal, 50% Glycerol, pH 7.3.
Isotype	IgG
Storage Instruction	Store at -20°C for up to 1 year from the date of receipt, and avoid repeat freeze-thaw cycles.

TARGET INFORMATION

Gene ID	57468
Gene Symbol	SLC12A5
Uniprot ID	S12A5_HUMAN
Immunogen	
Immunogen Region	945-1025
Specificity	Recombinant fusion protein containing a sequence corresponding to amino acids 945-1025 of human SLC12A5 (NP_001128243.1).
Immunogen Sequence	TKNEREREIQSITDESRGSI RRKNPNANTRLRNLNPEETAG DSEEEKPEEEVQLIHDQSAPS CPSSSPSPGEEPEGEGETDP E



This product is suitable for in-vitro studies under the RESEARCH USE ONLY [RUO] licence. This product must not be used as for diagnostic or other medical purposes.
St John's Laboratory Ltd, Knowledge Dock Business Centre, University Way, London, E16 2RD | Tel: 0208 223 3081