

Anti-PLEKHB2 antibody (1-222) (STJ117657)
STJ117657

GENERAL INFORMATION

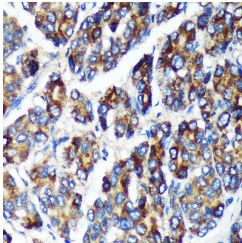
Product Type	Primary antibodies
Short Description	
Applications	WB/IHC-P/ELISA
Host/Source	Rabbit
Reactivity	Human

PRODUCT PROPERTIES

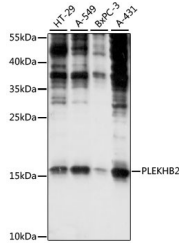
Clonality	Polyclonal
Clone ID	
Concentration	Lot specific
Conjugation	Unconjugated
Purification	Affinity purification
Dilution	WB:1:200-1:2000
Range	IHC-P:1:50-1:200 ELISA:Recommended starting concentration is 1 Mu g/mL. Please optimize the concentration based on your specific assay requirements.
Formulation	PBS with 0.01% Thimerosal, 50% Glycerol, pH 7.3.
Isotype	IgG
Storage Instruction	Store at -20°C for up to 1 year from the date of receipt, and avoid repeat freeze-thaw cycles.

TARGET INFORMATION

Gene ID	55041
Gene Symbol	PLEKHB2
Uniprot ID	PKHB2_HUMAN
Immunogen	
Immunogen Region	1-222
Specificity	Recombinant fusion protein containing a sequence corresponding to amino acids 1-222 of human PLEKHB2 (NP_001094093.1).
Immunogen Sequence	MAFVKSGWLLRQSTILKRWK KNWFDLWSDGHLIYYDDQTR QNIEDKVHMPMDCINIRTGQ ECRDTQPPDGKSKDCMLQIV CRDGKTISLCAESTDDCLAW KFTLQDSRTNTAYVGSAMT DETSVSSPPPYTAYAAPAP EQAYGYGPGYGGAYPPGTQVV YAANGQAYAVPYQYPYAGLY GQQPANQVIIRERYRDNDSD LALGMLAGAAATGMALGSLFW VF



Immunohistochemistry analysis of PLEKHB2 in paraffin-embedded Human liver cancer using PLEKHB2 Rabbit polyclonal antibody (STJ117657) at dilution of 1:100 (40x lens). Perform microwave antigen retrieval with 10 mM PBS buffer, pH 7.2 before commencing with immunohistochemistry staining protocol.



Western blot analysis of various lysates using PLEKHB2 Rabbit polyclonal antibody (STJ117657) at 1:1000 dilution. Secondary antibody: HRP Goat Anti-Rabbit IgG (H+L) (STJ5000856) at 1:10000 dilution. Lysates/proteins: 25 Mu g per lane. Blocking buffer: 3% nonfat dry milk in TBST. Detection: ECL Basic Kit. Exposure time: 30s.

This product is suitable for in-vitro studies under the RESEARCH USE ONLY [RUO] licence. This product must not be used as for diagnostic or other medical purposes.
St John's Laboratory Ltd, Knowledge Dock Business Centre, University Way, London, E16 2RD | Tel: 0208 223 3081