

Anti-FHOD1 antibody (1010-1120) (STJ117633)

STJ117633

GENERAL INFORMATION

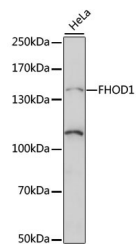
Product Type	Primary antibodies
Short Description	
Applications	WB/ELISA
Host/Source	Rabbit
Reactivity	Human

PRODUCT PROPERTIES

Clonality	Polyclonal
Clone ID	
Concentration	Lot specific
Conjugation	Unconjugated
Purification	Affinity purification
Dilution Range	WB:1:200-1:2000 ELISA: Recommended starting concentration is 1 µg/mL. Please optimize the concentration based on your specific assay requirements.
Formulation	PBS with 0.01% Thimerosal, 50% Glycerol, pH 7.3.
Isotype	IgG
Storage	Store at -20°C for up to 1 year from the date of receipt, and avoid repeat freeze-thaw cycles.
Instruction	

TARGET INFORMATION

Gene ID	29109
Gene Symbol	FHOD1
Uniprot ID	FHOD1_HUMAN
Immunogen	
Immunogen Region	1010-1120
Specificity	Recombinant fusion protein containing a sequence corresponding to amino acids 1010-1120 of human FHOD1 (NP_037373.2).
Immunogen Sequence	TRGRMITETKFGSGVAGEAP SNPSVPVAVSSGPGRGDADS HASMKSLTSPEDTTHNRR SRGMVQSSSPIMPTVGPSTA SPEEPPGSSLPDTSDEIMD LLVQSVTKSSP



Western blot analysis of lysates from HeLa cells, using FHOD1 Rabbit polyclonal antibody (STJ117633) at 1:1000 dilution. Secondary antibody: HRP Goat Anti-Rabbit IgG (H+L) (STJ5000856) at 1:10000 dilution. Lysates/proteins: 25 µg per lane. Blocking buffer: 3% nonfat dry milk in TBST. Detection: ECL Basic Kit. Exposure time: 90s.

This product is suitable for in-vitro studies under the RESEARCH USE ONLY [RUO] licence. This product must not be used as for diagnostic or other medical purposes.
St John's Laboratory Ltd, Knowledge Dock Business Centre, University Way, London, E16 2RD | Tel: 0208 223 3081