

Anti-LMAN2 antibody (190-320) (STJ117589)

STJ117589

GENERAL INFORMATION

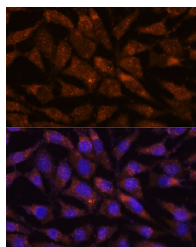
Product Type	Primary antibodies
Short Description	
Applications	WB/IF/ICC/ELISA
Host/Source	Rabbit
Reactivity	Mouse

PRODUCT PROPERTIES

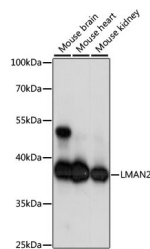
Clonality	Polyclonal
Clone ID	
Concentration	Lot specific
Conjugation	Unconjugated
Purification	Affinity purification
Dilution Range	WB:1:200-1:2000 IF/ICC:1:50-1:200 ELISA:Recommended starting concentration is 1 µg/mL. Please optimize the concentration based on your specific assay requirements.
Formulation	PBS with 0.01% Thimerosal, 50% Glycerol, pH 7.3.
Isotype	IgG
Storage Instruction	Store at -20°C for up to 1 year from the date of receipt, and avoid repeat freeze-thaw cycles.

TARGET INFORMATION

Gene ID	10960
Gene Symbol	LMAN2
Uniprot ID	LMAN2_HUMAN
Immunogen	
Immunogen Region	190-320
Specificity	Recombinant fusion protein containing a sequence corresponding to amino acids 190-320 of human LMAN2 (NP_006807.1).
Immunogen Sequence	HSKDGRWTELAGCTADFRNR DHDFTLAVRYSRGRLTVMTD LEDKNEWKNCIDITGVRLPT GYYFGASAGTGDLSDNHDII SMKLFQLMVEHTPDEESIDW TKIEPSVNFCLKSPKDNVDDP TGNFRSGPLTG



Immunofluorescence analysis of L929 cells using LMAN2 Rabbit polyclonal antibody (STJ117589) at dilution of 1:100. Secondary antibody: Cy3 Goat Anti-Rabbit IgG (H+L) at 1:500 dilution. Blue: DAPI for nuclear staining.



Western blot analysis of various lysates using LMAN2 Rabbit polyclonal antibody (STJ117589) at 1:1000 dilution. Secondary antibody: HRP Goat Anti-Rabbit IgG (H+L) (STJS000856) at 1:10000 dilution. Lysates/proteins: 25 µg per lane. Blocking buffer: 3% nonfat dry milk in TBST. Detection: ECL Basic Kit. Exposure time: 1s.