

Anti-GRAP antibody (128-217) (STJ117586)

STJ117586

GENERAL INFORMATION

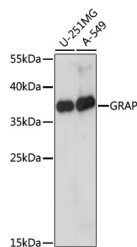
Product Type	Primary antibodies
Short Description	
Applications	WB/ELISA
Host/Source	Rabbit
Reactivity	Human

PRODUCT PROPERTIES

Clonality	Polyclonal
Clone ID	
Concentration	Lot specific
Conjugation	Unconjugated
Purification	Affinity purification
Dilution Range	WB:1:200-1:2000 ELISA:Recommended starting concentration is 1 Mu g/mL. Please optimize the concentration based on your specific assay requirements.
Formulation	PBS with 0.01% Thimerosal, 50% Glycerol, pH 7.3.
Isotype	IgG
Storage Instruction	Store at -20°C for up to 1 year from the date of receipt, and avoid repeat freeze-thaw cycles.

TARGET INFORMATION

Gene ID	10750
Gene Symbol	GRAP
Uniprot ID	GRAP_HUMAN
Immunogen	
Immunogen Region	128-217
Specificity	Recombinant fusion protein containing a sequence corresponding to amino acids 128-217 of human GRAP (NP_006604.1).
Immunogen Sequence	LNELVDFYRTTTIAKKRQIF LRDEEPLKSPGACFAQAQF DFSAQDPSQLSFRRGDIIEV LERPDPHWWGRSCGRVGF PRSYVQPVHL



Western blot analysis of various lysates using GRAP Rabbit polyclonal antibody (STJ117586) at 1:1000 dilution. Secondary antibody: HRP Goat Anti-Rabbit IgG (H+L) (STJS000856) at 1:10000 dilution. Lysates/proteins: 25 Mu g per lane. Blocking buffer: 3% nonfat dry milk in TBST. Detection: ECL Basic Kit. Exposure time: 5s.

This product is suitable for in-vitro studies under the RESEARCH USE ONLY [RUO] licence. This product must not be used as for diagnostic or other medical purposes.
St John's Laboratory Ltd, Knowledge Dock Business Centre, University Way, London, E16 2RD | Tel: 0208 223 3081