

## Anti-TRIP4 antibody (282-581) (STJ117547)

STJ117547

### GENERAL INFORMATION

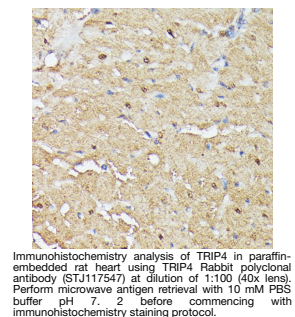
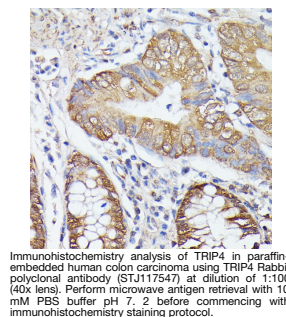
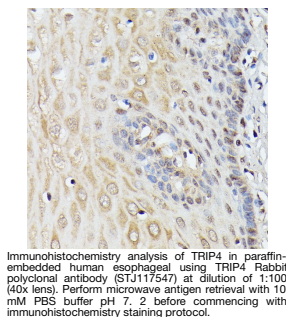
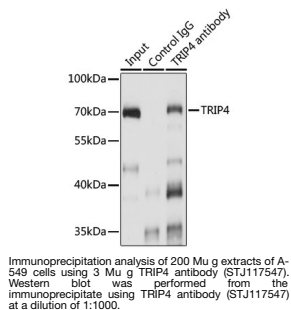
|                          |                    |
|--------------------------|--------------------|
| <b>Product Type</b>      | Primary antibodies |
| <b>Short Description</b> |                    |
| <b>Applications</b>      | WB/IHC-P/IP/ELISA  |
| <b>Host/Source</b>       | Rabbit             |
| <b>Reactivity</b>        | Human/Mouse/Rat    |

### PRODUCT PROPERTIES

|                      |  |
|----------------------|--|
| <b>Clonality</b>     | Polyclonal   |
| <b>Clone ID</b>      |  |
| <b>Concentration</b> | Lot specific   |
| <b>Conjugation</b>   | Unconjugated   |
| <b>Purification</b>  | Affinity purification  |
| <b>Dilution</b>      | WB:1:500-1:2000  |
| <b>Range</b>         | IHC-P:1:50-1:200<br>IP:0.5 Mu g-4 Mu g antibody for 200 Mu g-400 Mu g extracts of whole cells<br>ELISA:Recommended starting concentration is 1 Mu g/mL. Please optimize the concentration based on your specific assay requirements. |
| <b>Formulation</b>   | PBS with 0.01% Thimerosal, 50% Glycerol, pH 7.3.   |
| <b>Isotype</b>       | IgG  |
| <b>Storage</b>       | Store at -20°C for up to 1 year from the date of receipt, and avoid repeat freeze-thaw cycles.   |
| <b>Instruction</b>   |  |

### TARGET INFORMATION

|                           |  |
|---------------------------|--|
| <b>Gene ID</b>            | 9325   |
| <b>Gene Symbol</b>        | TRIP4  |
| <b>Uniprot ID</b>         | TRIP4_HUMAN  |
| <b>Immunogen</b>          |  |
| <b>Immunogen Region</b>   | 282-581  |
| <b>Specificity</b>        | Recombinant fusion protein containing a sequence corresponding to amino acids 282-581 of human TRIP4 (NP_057297.2).  |
| <b>Immunogen Sequence</b> | VIDDESDYFASDSNQWLSKL ERETQKREEELRELHASR LSKKVTIDFAGRKILEEENS LAEYHSRLDETIQAIANGTL<br>NQPLTKLDRSSEELGVLVN PNMYQSPQWVDHTGAASQK KAFRSSGFGLEFNSFQHLR IQDQEFQEGFDGGWCLSVHQ<br>PWASLLVRGIKRVEGRSWYT PHRGRLWIAATAKPPSQEV SELQATYRLLRGKDVEFPND YPSGCLLGCVDLIDCLSQK |



This product is suitable for in-vitro studies under the RESEARCH USE ONLY [RUO] licence. This product must not be used as for diagnostic or other medical purposes.  
St John's Laboratory Ltd, Knowledge Dock Business Centre, University Way, London, E16 2RD | Tel: 0208 223 3081