

Anti-CCL16 antibody (1-120) (STJ117512)

STJ117512

GENERAL INFORMATION

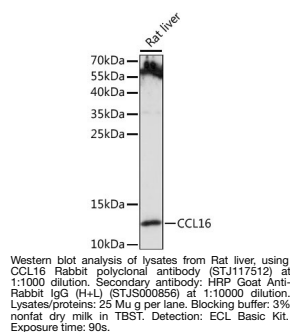
Product Type	Primary antibodies
Short Description	
Applications	WB/ELISA
Host/Source	Rabbit
Reactivity	Rat

PRODUCT PROPERTIES

Clonality	Polyclonal
Clone ID	
Concentration	Lot specific
Conjugation	Unconjugated
Purification	Affinity purification
Dilution Range	WB:1:200-1:2000
	ELISA: Recommended starting concentration is 1 Mu g/mL. Please optimize the concentration based on your specific assay requirements.
Formulation	PBS with 0.01% Thimerosal, 50% Glycerol, pH 7.3.
Isotype	IgG
Storage Instruction	Store at -20°C for up to 1 year from the date of receipt, and avoid repeat freeze-thaw cycles.

TARGET INFORMATION

Gene ID	6360
Gene Symbol	CCL16
Uniprot ID	CCL16_HUMAN
Immunogen	
Immunogen Region	1-120
Specificity	Recombinant fusion protein containing a sequence corresponding to amino acids 1-120 of human CCL16 (NP_004581.1).
Immunogen Sequence	MKVSEAALSLVLIIITSA SRSQPKVPEWVNTPTCCCLK YYEKVLPRLVWGYRKALNC HLPALIFVTKRNRVCTNPN DDWVQEYIKDPNLPPLPTRN LSTVKIITAKNGQPQLLSQ



This product is suitable for in-vitro studies under the RESEARCH USE ONLY [RUO] licence. This product must not be used as for diagnostic or other medical purposes.
St John's Laboratory Ltd, Knowledge Dock Business Centre, University Way, London, E16 2RD | Tel: 0208 223 3081