

Anti-MYH4 antibody (1500-1600) (STJ117488)
STJ117488

GENERAL INFORMATION

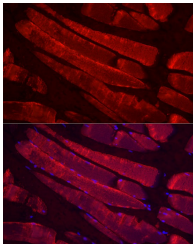
Product Type	Primary antibodies
Short Description	
Applications	WB/IHC-P/IF/ICC/ELISA
Host/Source	Rabbit
Reactivity	Human/Mouse/Rat

PRODUCT PROPERTIES

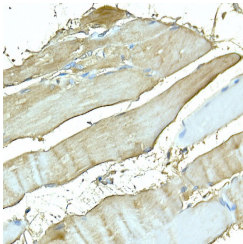
Clonality	Polyclonal
Clone ID	
Concentration	Lot specific
Conjugation	Unconjugated
Purification	Affinity purification
Dilution Range	WB:1:100-1:500 IHC-P:1:50-1:200 IF/ICC:1:50-1:200 ELISA:Recommended starting concentration is 1 µg/mL. Please optimize the concentration based on your specific assay requirements.
Formulation	PBS with 0.09% Sodium Azide, 50% Glycerol, pH 7.3.
Isotype	IgG
Storage Instruction	Store at -20°C for up to 1 year from the date of receipt, and avoid repeat freeze-thaw cycles.

TARGET INFORMATION

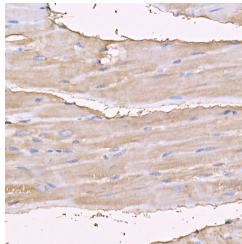
Gene ID	4622
Gene Symbol	MYH4
Uniprot ID	MYH4_HUMAN
Immunogen	
Immunogen Region	1500-1600
Specificity	A synthetic peptide corresponding to a sequence within amino acids 1500-1600 of human MYH4 (NP_060003.2).
Immunogen Sequence	ETLKREKNLQQEISDLTEQ IAEGGKHIHELEKVKQLDH EKSELQTSLEEAEASLEHEE GKILRIQLELNQVKSEIDRK IAEKDEELDQLKRNLRWVE S



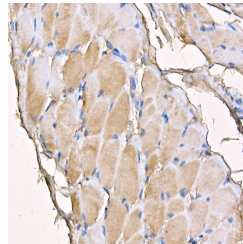
Immunofluorescence analysis of paraffin-embedded rat skeletal muscle using MYH4 Rabbit polyclonal antibody (STJ117488) at dilution of 1:100 (40x lens). Secondary antibody: Cy3 Goat Anti-Rabbit IgG (H+L) at 1:500 dilution. Blue: DAPI for nuclear staining.



Immunohistochemistry analysis of MYH4 in paraffin-embedded rat skeletal muscle using MYH4 Rabbit polyclonal antibody (STJ117488) at dilution of 1:100 (40x lens). Perform high pressure antigen retrieval with 10 mM citrate buffer pH 6.0 before commencing with immunohistochemistry staining protocol.



Immunohistochemistry analysis of MYH4 in paraffin-embedded rat heart using MYH4 Rabbit polyclonal antibody (STJ117488) at dilution of 1:100 (40x lens). Perform high pressure antigen retrieval with 10 mM citrate buffer pH 6.0 before commencing with immunohistochemistry staining protocol.



Immunohistochemistry analysis of MYH4 in paraffin-embedded mouse skeletal muscle using MYH4 Rabbit polyclonal antibody (STJ117488) at dilution of 1:100 (40x lens). Perform high pressure antigen retrieval with 10 mM citrate buffer pH 6.0 before commencing with immunohistochemistry staining protocol.