

## Anti-PLA2G4D antibody (510-680) (STJ117418)

STJ117418

### GENERAL INFORMATION

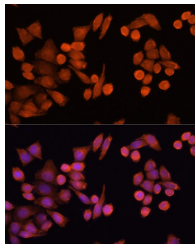
<b>Product Type</b>	Primary antibodies
<b>Short Description</b>	
<b>Applications</b>	IF/ICC/ELISA
<b>Host/Source</b>	Rabbit
<b>Reactivity</b>	Human

### PRODUCT PROPERTIES

<b>Clonality</b>	Polyclonal
<b>Clone ID</b>	
<b>Concentration</b>	Lot specific
<b>Conjugation</b>	Unconjugated
<b>Purification</b>	Affinity purification
<b>Dilution</b>	IF/ICC:1:50-1:200
<b>Range</b>	ELISA:Recommended starting concentration is 1 µg/mL. Please optimize the concentration based on your specific assay requirements.
<b>Formulation</b>	PBS with 0.01% Thimerosal, 50% Glycerol, pH 7.3.
<b>Isotype</b>	IgG
<b>Storage</b>	Store at -20°C for up to 1 year from the date of receipt, and avoid repeat freeze-thaw cycles.
<b>Instruction</b>	

### TARGET INFORMATION

<b>Gene ID</b>	283748
<b>Gene Symbol</b>	PLA2G4D
<b>Uniprot ID</b>	PA24D_HUMAN
<b>Immunogen</b>	
<b>Immunogen Region</b>	510-680
<b>Specificity</b>	Recombinant fusion protein containing a sequence corresponding to amino acids 510-680 of human PLA2G4D (NP_828848.3).
<b>Immunogen Sequence</b>	RLMRRIPRIFLEAIWSN IFSLNLLDAWYDLTSSGESW KQHIKDKTRSLEKEPLTTSG TSSRLEASWLQPGTALAQAF KGFLTGRLHQRSNPLQGL QLHQDYCSHKDFSTWADYQL DSMPSQLTPKEPRLCLVDAA YFINTSSPSMFRPGRRDLI LSFYDLSAPF



Immunofluorescence analysis of HeLa cells using PLA2G4D Rabbit polyclonal antibody (STJ117418) at dilution of 1:100 (40x lens). Secondary antibody: Cy3 Goat Anti-Rabbit IgG (H+L) at 1:500 dilution. Blue: DAPI for nuclear staining.

This product is suitable for in-vitro studies under the RESEARCH USE ONLY [RUO] licence. This product must not be used as for diagnostic or other medical purposes.  
St John's Laboratory Ltd, Knowledge Dock Business Centre, University Way, London, E16 2RD | Tel: 0208 223 3081