

Anti-DYNLRB1 antibody (1-63) (STJ117391)

STJ117391

GENERAL INFORMATION

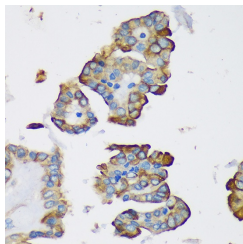
Product Type	Primary antibodies
Short Description	
Applications	WB/IHC-P/ELISA
Host/Source	Rabbit
Reactivity	Human/Mouse

PRODUCT PROPERTIES

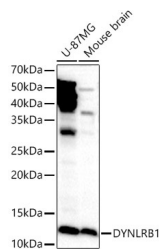
Clonality	Polyclonal
Clone ID	
Concentration	Lot specific
Conjugation	Unconjugated
Purification	Affinity purification
Dilution Range	WB:1:500-1:1000 IHC-P:1:50-1:200 ELISA:Recommended starting concentration is 1 Mu g/mL. Please optimize the concentration based on your specific assay requirements.
Formulation	PBS with 0.05% Proclin300, 50% Glycerol, pH 7.3.
Isotype	IgG
Storage Instruction	Store at -20°C for up to 1 year from the date of receipt, and avoid repeat freeze-thaw cycles.

TARGET INFORMATION

Gene ID	83658
Gene Symbol	DYNLRB1
Uniprot ID	DLRB1_HUMAN
Immunogen	
Immunogen Region	1-63
Specificity	A synthetic peptide corresponding to a sequence within amino acids 1-63 of human DYNLRB1 (NP_001268656.1). MDNPTTTQYASLMHSFILKA RSTVRDIDPQNDLTLRIRS KKNEIMVAPDKDYFLVIQN PTE
Immunogen Sequence	



Immunohistochemistry analysis of paraffin-embedded Human thyroid cancer using DYNLRB1 Rabbit polyclonal antibody (STJ117391) at dilution of 1:100 (40x lens). Perform microwave antigen retrieval with 10 mM PBS buffer pH 7.2 before commencing with immunohistochemistry staining protocol.



Western blot analysis of extracts of various cell lines, using DYNLRB1 antibody (STJ117391) at 1:700 dilution. Secondary antibody: HRP Goat Anti-Rabbit IgG (H+L) (STJS000856) at 1:10000 dilution. Lysates/proteins: 25 Mu g per lane. Blocking buffer: 3% nonfat dry milk in TBST. Detection: ECL Basic Kit. Exposure time: 90s.

This product is suitable for in-vitro studies under the RESEARCH USE ONLY [RUO] licence. This product must not be used as for diagnostic or other medical purposes.
St John's Laboratory Ltd, Knowledge Dock Business Centre, University Way, London, E16 2RD | Tel: 0208 223 3081